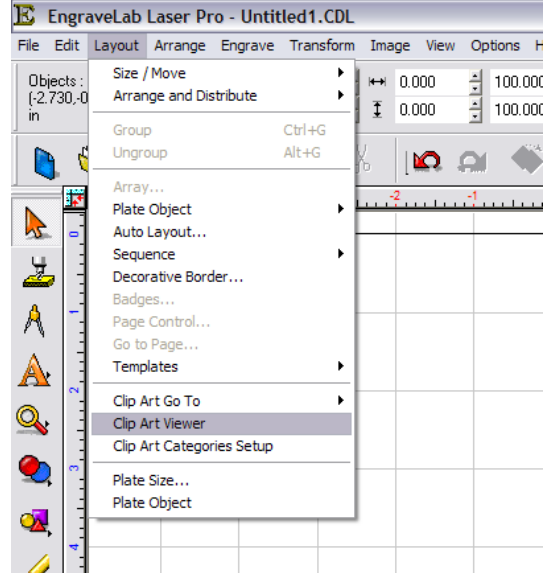




Adding clip-art

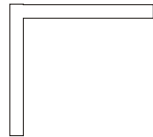
In the “Layout” menu go to clip-art viewer



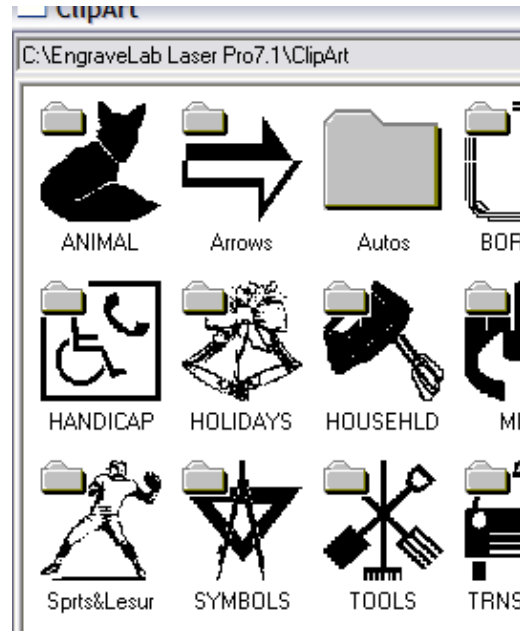
Select the desired folder

After desired clip-art is selected click ok

The following icon will appear where your mouse pointer is:



Then, click wherever you want the top left corner of the image to be and you can then move the clipart wherever you would like it, and resize it however you like.



****Please Note: if you are entering clip-art onto a blank plate, the software will automatically resize the plate size to the size of plate it was created on. If you would like your plate size to remain the same you must add something (ex. Text, shape, or logo) to your plate before you insert it with the clipart viewer****