

## Creating Multiple Badges per Plate

In the previous lesson, *Creating a Multi-line Plate*, text was arranged on a multi-line plate. Using that example as a basis, the plate was used to create a series of badges, where there was a single badge per plate.

In this lesson, the plate text will be used to create a series of badges, except that multiple badges will be arranged on a single plate.

---

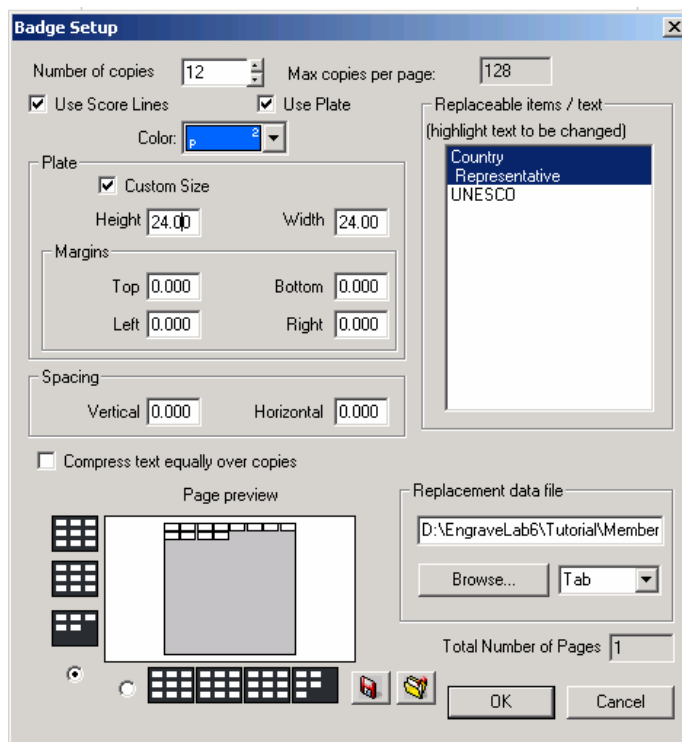
**Note:** In the lesson, *Creating a Multi-line Plate*, the multi-line plate was stored as a "badge.cdl" file, and badge replacement text was stored as a "MemberStates.txt" file. Both files will be referred to within this lesson.

---

### Initial Setup

We will start with the creation of the badges.

- A) In EngraveLab, load the workspace file "badge.cdl" that was created in the previous tutorial section.
- B) From the **Edit** menu, choose **Select All**. The text shapes will now be selected.
- C) From the **Layout** menu, choose the **Badges** item. The **Badge Setup** dialog will open.



D) If the **Use Plate** option is selected, then disable it and then enable it again. Notice that the **Page preview** is now showing as a multiple badges arranged on a single plate.

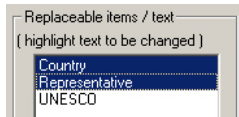
E) Notice that the **Plate** fields, **Height** and **Width**, have been set to the dimensions of the sign plate. However, this example presumes that a sheet of material (24 inches by 24 inches) has been loaded into the machine. So in the **Badge Setup** dialog, the **Height** field should be 24, and the **Width** field should be 24. The **Page preview** now indicates that there are 58 badges arranged on a single plate.

### Lesson 3 - Creating Multiple Badges per Plate

- F) Set the **Margins – Top, Bottom, Left, and Right** to zero.
- G) Set the **Spacing – Vertical** and **Horizontal** to zero.
- H) Verify that the **Compress Text Equally Over Copies** option is disabled.
- I) Enable the **Use Score Lines** option, and set the **Color** drop-list to Blue (P3).

#### Set Replacement Text

- K) In the **Replaceable items / text** list, click the first line of text ("Country"). Then while pressing the [Ctrl] key, click the second line of text ("Representative"). The **Replaceable items / text** list should appear as follows:

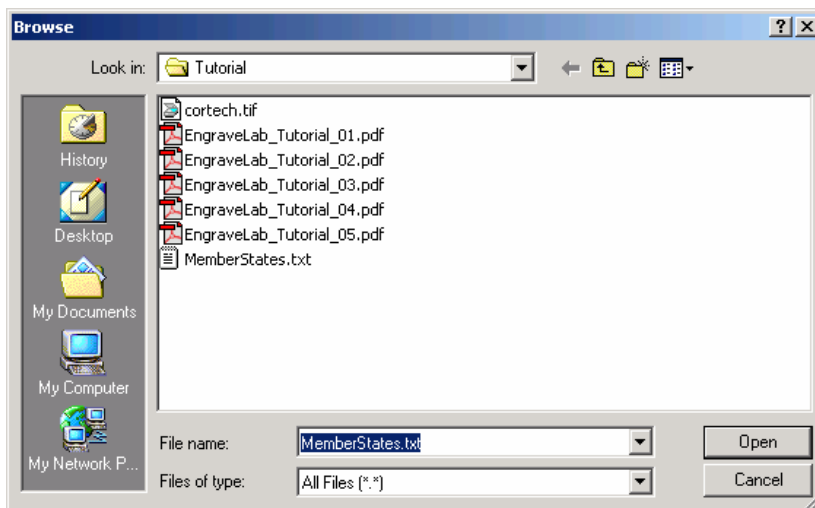


---

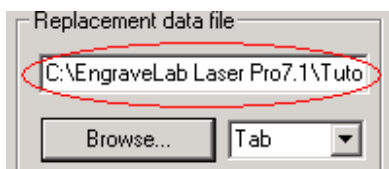
**Note:** The **Replaceable items / text** are arranged according to their database order (i.e. the order in which they were created on the workspace).

---

- L) Within the **Replacement data file** section, click the **Browse** button. The **Browse** dialog will open.



- M) Using the **Browse** dialog, locate the "MemberStates.txt" file that was previously created. Select the file and click **Open**. The **Badge Setup** dialog will indicate that the file has been selected.

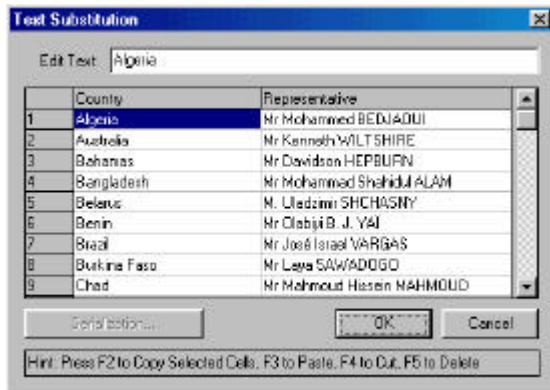


- N) To the right of the **Browse** button, verify that the drop -list has been set to "Tab".

#### Text Substitution

- O) Click **OK** to close the **Badge Setup** dialog, and the **Text Substitution** dialog will open. The 58 entries from the "MemberStates.txt" file will be displayed.

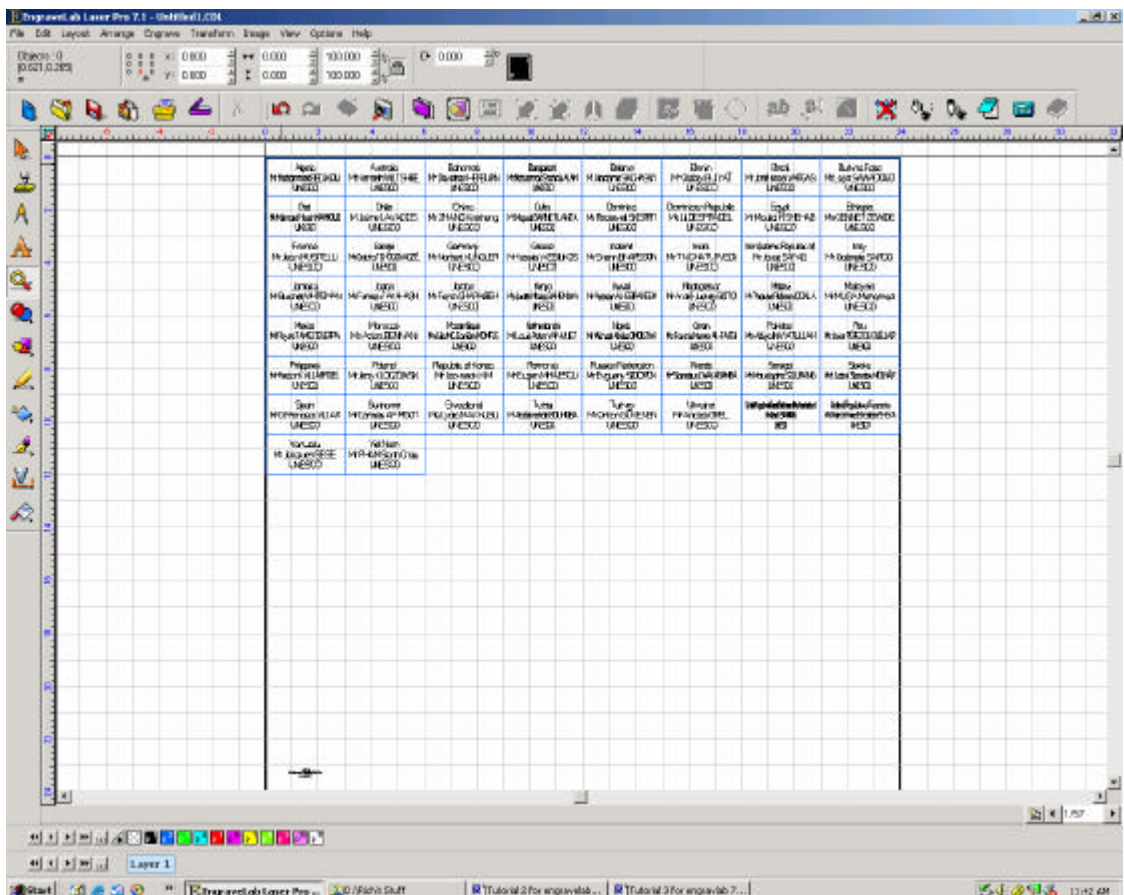
### Lesson 3 - Creating Multiple Badges per Plate



P) Click **OK** to accept the **Text Substitution** fields, and EngraveLab will proceed to create the badges.

### The Finished Badges

When the badges have been completed, the workspace will reset the plate size to 24 inches by 24 inches, and the twelve badges will be arranged upon the plate.



Below is a close up of the badges we just created

### Lesson 3 - Creating Multiple Badges per Plate

	Algeria Mr Mohammed BEDJAOUI UNESCO		Australia Mr Kenneth WILTSHIRE UNESCO	
	Chad Mr Mahmoud Hissein MAHMOUD UNESCO		Chile M. Jaime LAVADOS UNESCO	