



Newing-Hall, Inc.

2019 Monroe Street . Toledo, Ohio 43604-1740

Phone:(419)255-8804 Fax:(419)255-6943

Phone:(800)255-8804 Fax:(800)435-7131

www.newing-hall.com sales@newing-hall.com

Creating a Raised/Braille sign.

Preparing the sign Material

You need two special engraving material for creating rasied letter signage.

1. **Substrate** or backing plate. This base material is the thicker of the two materials.
2. **Cap sheet** or top sheet has adhesive applied to its bottom.

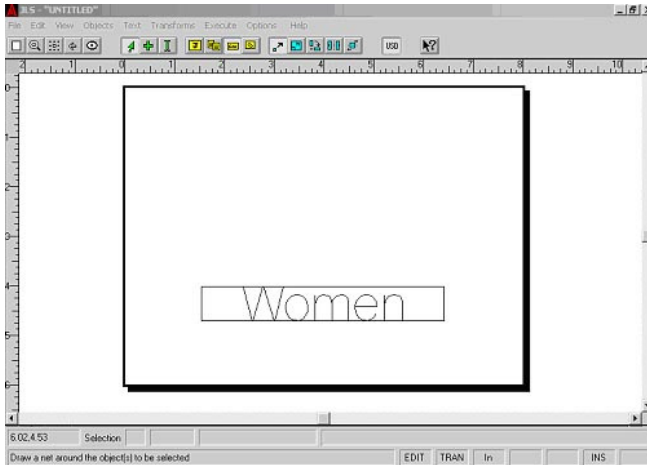
Place the cap sheet on top of the substrate.

Setting up the job

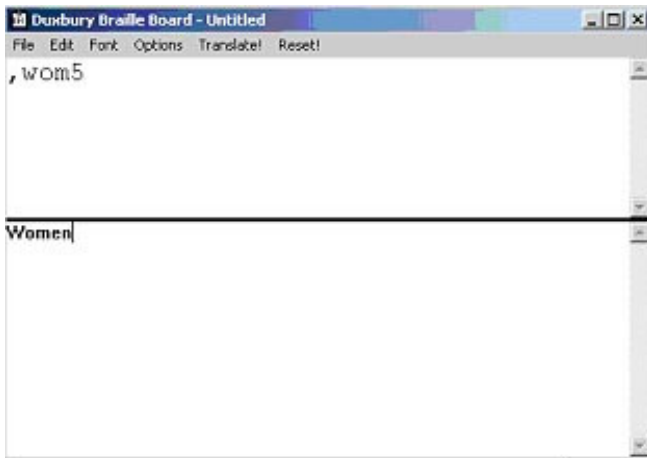
Set the plate up with the height and a width of your sign with 2 lines of text and one graphic box.

In the graphic box you will put you pictogram. (Women graphic)

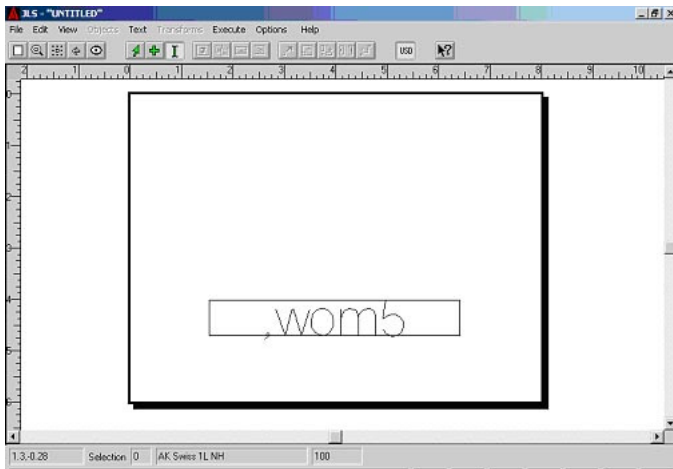
In the text box you will type the corresponding text (Women)



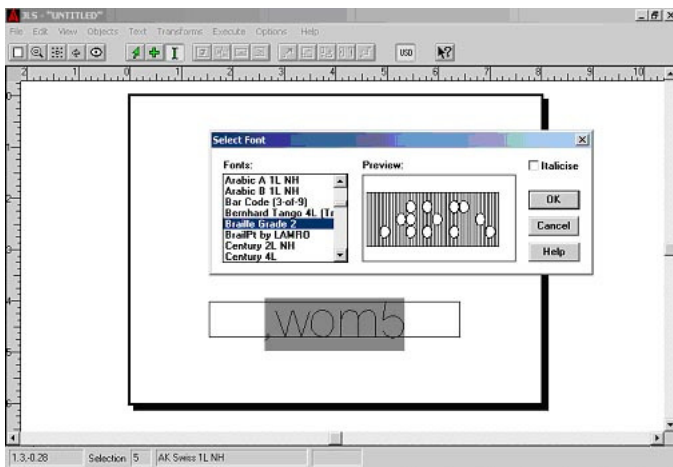
Text in sign



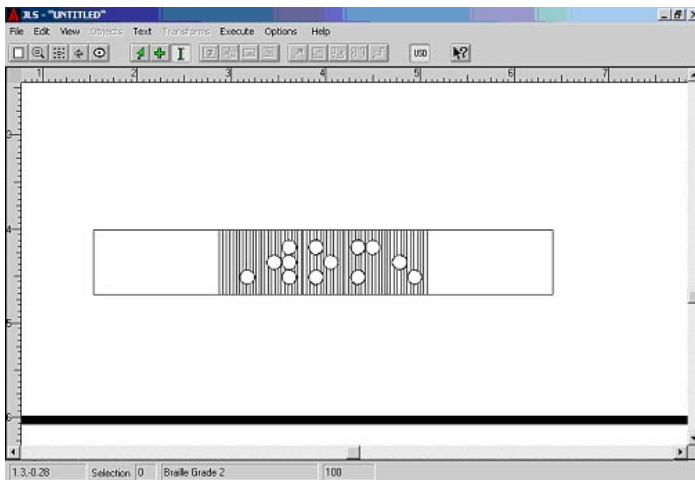
Braille board translator



Text in Job after translation



Selecting Braille font in JLS (Braille grade2)



Text ready to engrave

Engraving the raised portion of the sign
Place the sign material (Substrate and cap) with the cap sheet up.
Set the special cutter to engrave at a depth of 0.030”.

The goal is to cut through the cap sheet and the adhesive but only cut in to the substrate slightly. Once engraving is complete, check to ensure that the cut is through the cap sheet. The unwanted outside of the cap sheet may now be peeled off the substrate. Be careful not to disturb the pictogram or the letters.

Adding Braille to the raised letter sign

Set the plate up with the height and a width of your sign with 1 line of text.

Line 1 should be centered character height set to **0.395"**

Type Women for the line of text, add a blank space before and after the text to increase the amount before the actual message. Convert the text in the Braille translator (Duxbury)

(Women should be translated to look like ,wom5)

Engraving the Braille Portion of the sign

Place the already engraved sign back in to the engraver with the letter side up.

Set the special Braille cutter to a depth of .020 or slightly deeper.

The Braille portion of the sign may now be engraved.

Once the engraving of the Braille is finished the sign is complete.

The Braille character rules must be followed for all signage.

Rules

It is essential that Grade Two Braille conform to the following specifications.

1. Braille lines must have a character height of 0.395".
2. Additional Braille lines must have a base line of 0.395 more than the previous line
3. Set the depth at .020" using special cutter.
4. Braille lines must not be condensed. A condense of 100 must be maintained.