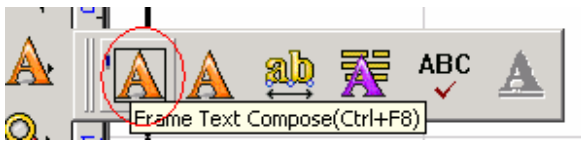


## Creating Raised Dot Braille Signs in EngraveLab 7

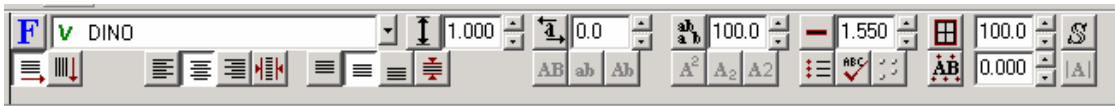
In this lesson, the steps to create a raised dot Braille sign will be described. After setting up the default Braille font, an example of converting a line of text to Braille will be described. The final step is a basic description of how to setup an engraving driver to create raised Braille dots.

### Setting up the default Braille font

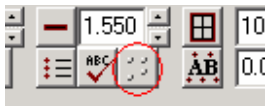
The first step is to setup the proper default Braille font. Start by choosing the **Text Compose** icon from the **Text Tools** flyout to the left of the workspace.



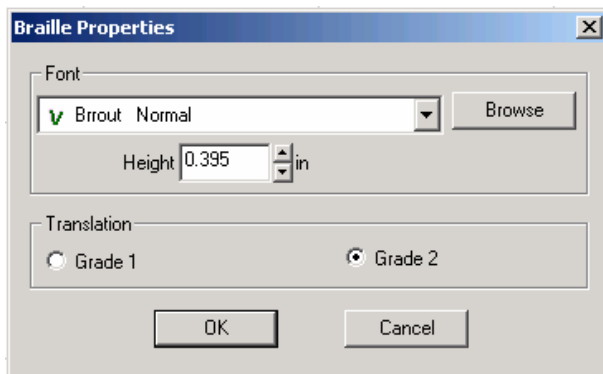
Next, single click within the Plate on screen. The **Text Compose** controls will be displayed in the SmartBar as shown below.



To set the default Braille font, single click with the Right Mouse Button on the **Braille** button

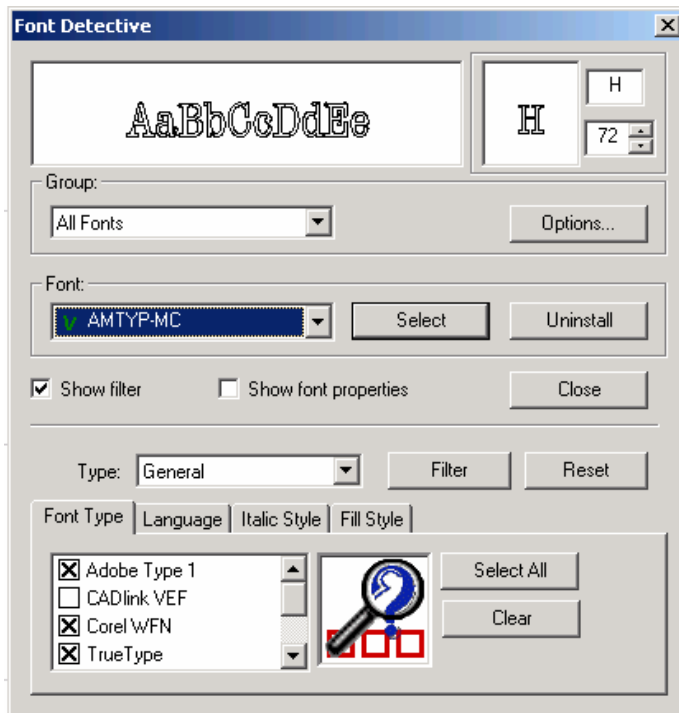


The **Braille Properties** window will open.

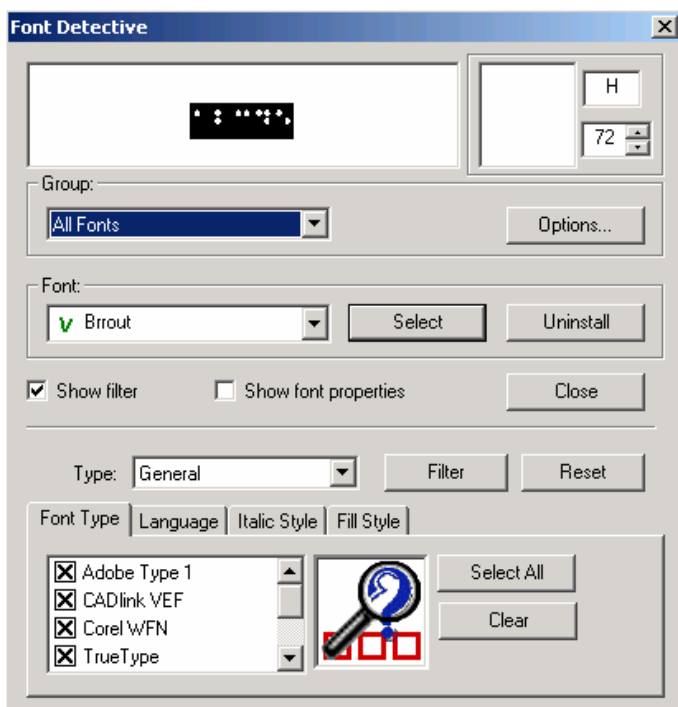


Click the **Browse** button, and the **Font Detective** window will open.

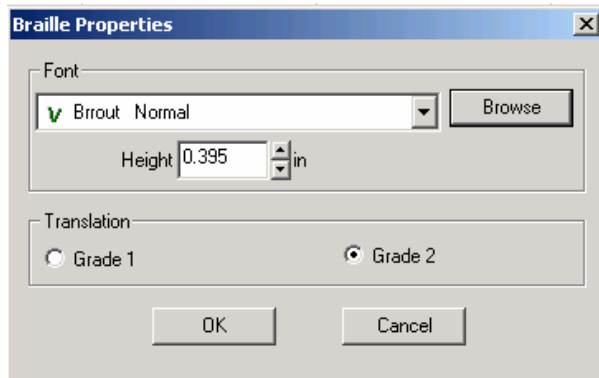
## Lesson 8 – Creating Raised Dot Braille Signs



Make sure that the Group drop down list is set to All Fonts. From the **Font** drop down list, locate the font called Brrout



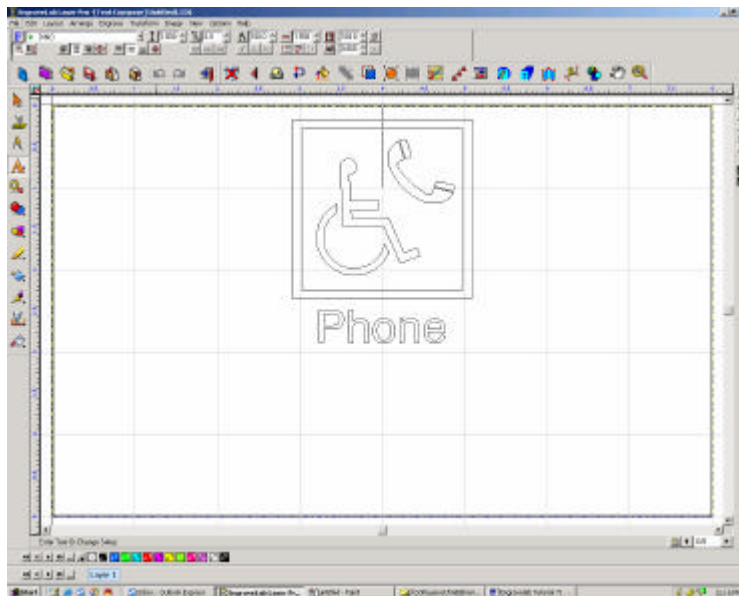
Click the **Select** button to close the **Font Detective**. The selected Braille font will display in the **Braille Properties** window.



Click **OK** to close the **Braille Properties** window. Brrout is now setup as the default Braille font.

## Converting a line of text to Braille

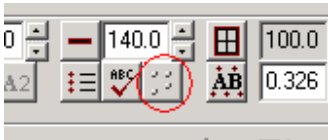
In EngraveLab, open the file called Braille.cdl.



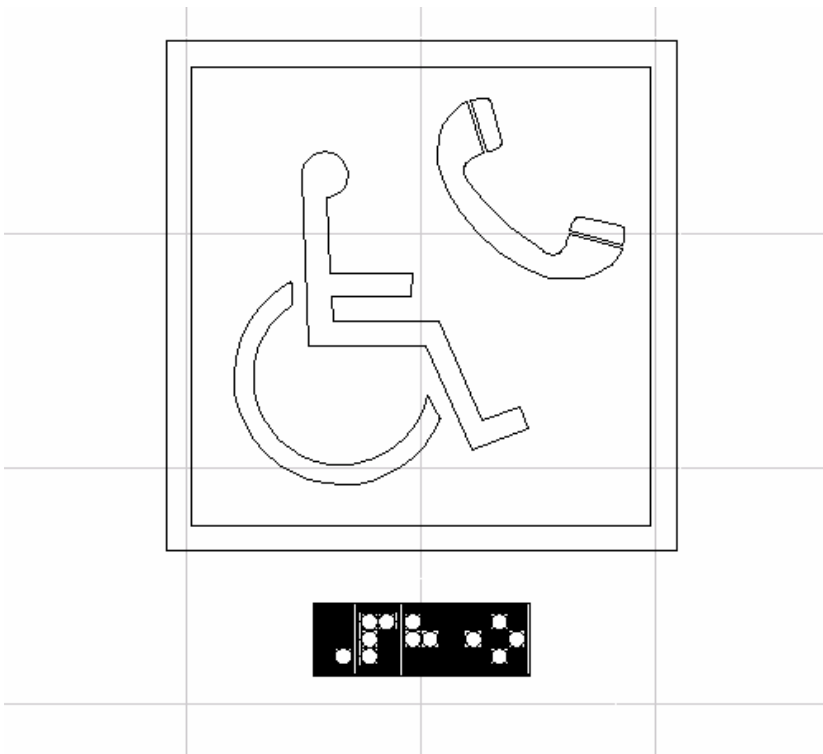
Single click on the word Phone. Next click on the **Edit** menu and select **Edit Text**. Note that the Smart Bar should display at the top of the EngraveLab workspace as shown below.



Left-Click on the Braille button.



EngraveLab will convert the selected text to Braille. The resulting plate should look like the following.



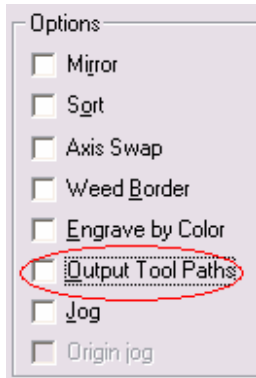
### How to create raised Braille dots on your rotary engraver

The Brrout font is specifically designed for routing around every “dot” in a Braille cell using a 0.020 cutting tip. To setup an engraving driver to rout out Braille dots using the Brrout font, click on the Engrave menu and then Engraving Defaults. The Output window will now open. Select the appropriate driver for your engraver. Once the appropriate driver is selected, click on the Tool option. Make sure that the correct Tool option is selected. Typically this option would be set to Single Pass, Multi Pass, Engraver, Router

## Lesson 8 – Creating Raised Dot Braille Signs

or Controller Depth. Note that not all engraving drivers are setup the same. Contact CADlink if you are unsure of the correct setting.

In the Options section of the Output window, make sure that the Output Tool Paths option is DISABLED.



In the Engrave section, make sure that the Plate option is enabled. Enabling the Plate option ensures that the position of the Braille dots as positioned on screen is respected when outputting to the engraving machine .



Click on Save Default button in the Output window. You are now ready to send your job to your rotary engraver.

Congratulations on completing the Raised Dot Braille Sign tutorial for EngraveLab V7