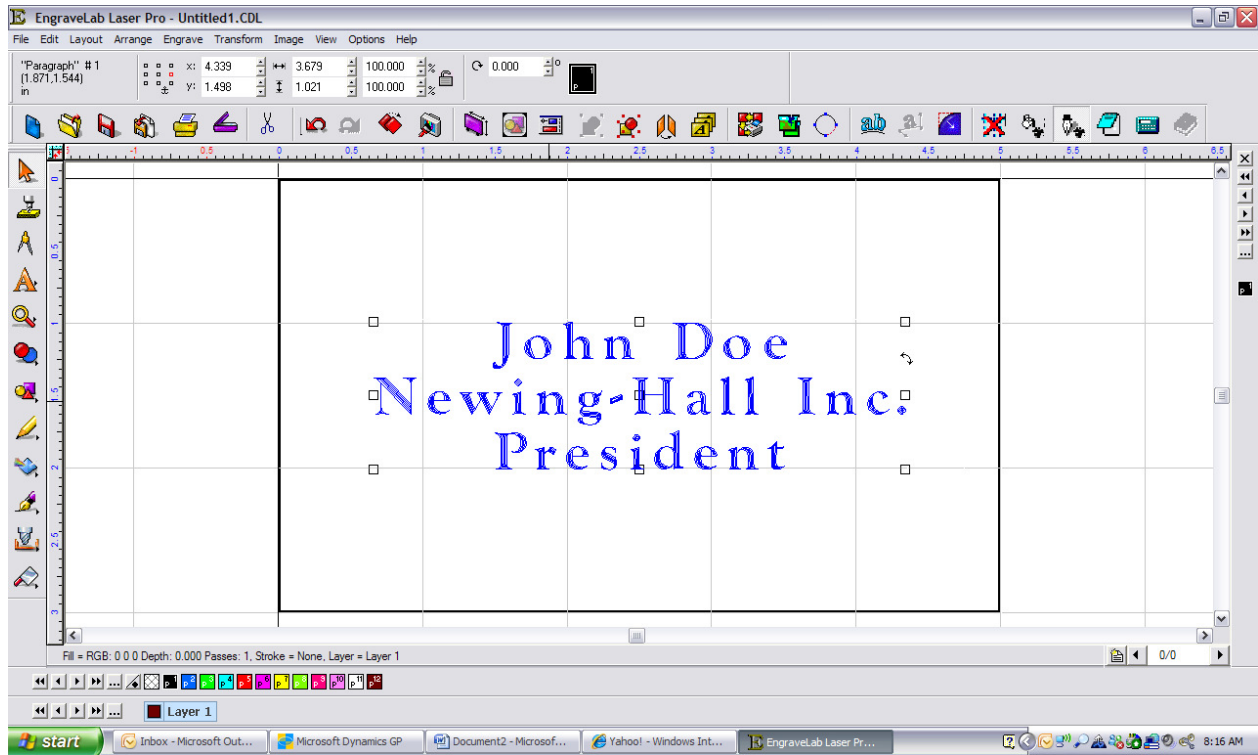
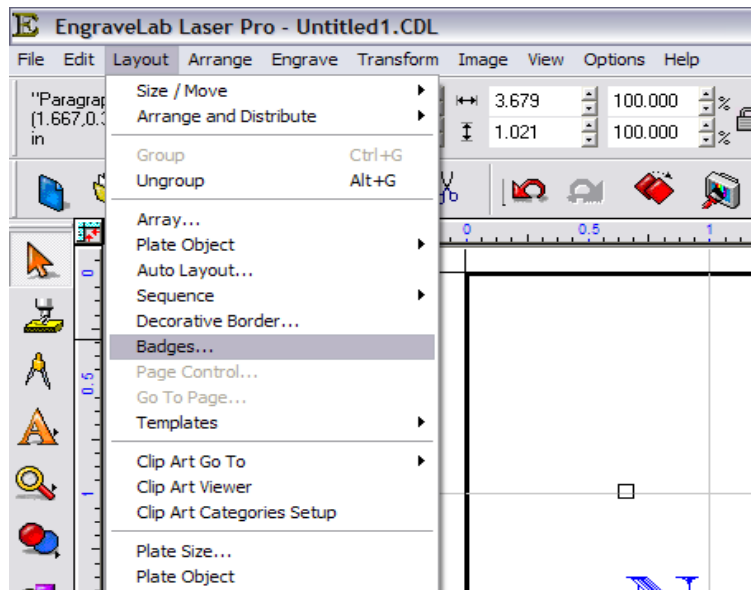


# Engraving Multiple Pages

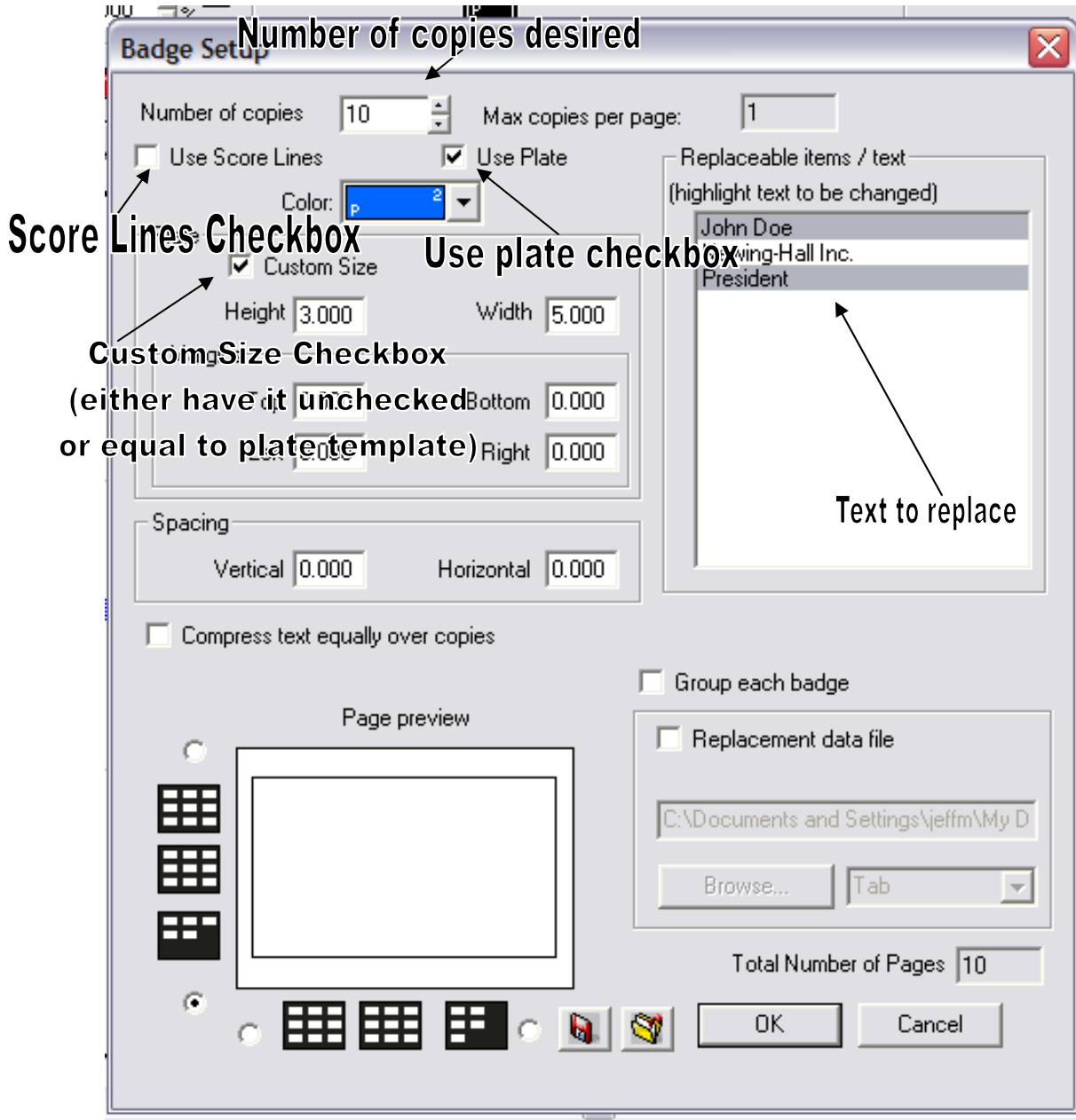
Create the job you would like your multiples to be created from (*see below*).



With all of the contents on the plate selected go to "Layout" > "badges" (*below*)...this will bring up the badges menu

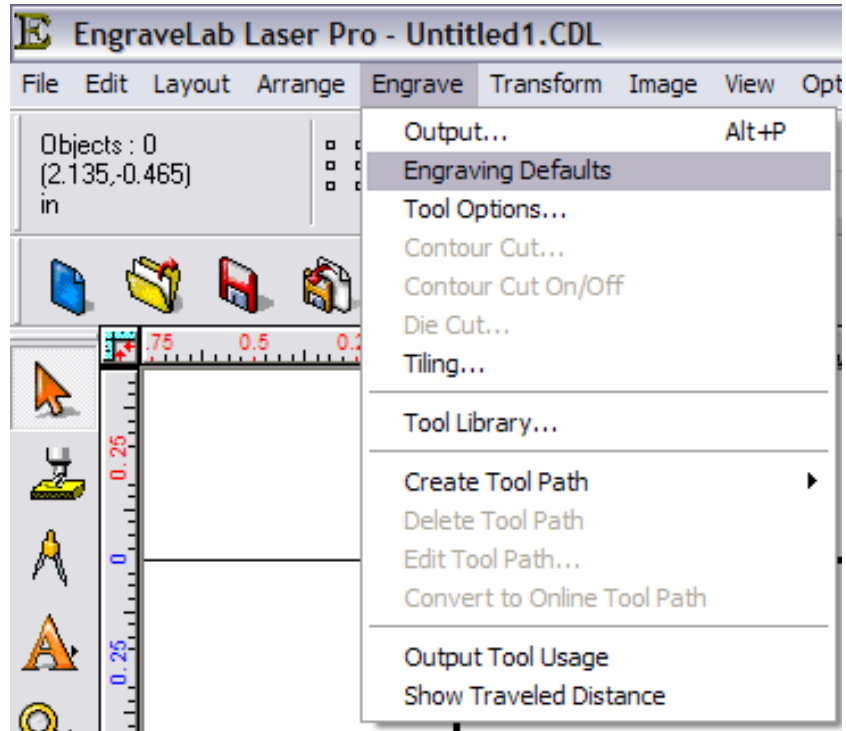


Because you are doing one plate at a time you will most likely not be scoring (make sure score lines box is unchecked), and you will also not be using a custom plate because your plate is pre-cut (make sure custom plate box is unchecked). When you created your first plate as a template you made it the size you want each plate to be, so you will have the “use plate” option selected. In the top you can put in how many different plates you are wanting to do (in the example below I am doing 10). The last thing you will want to do is highlight the text in the right side box that is going to be different on the plate (in the example below the name and person’s title are being changed with the middle line being kept equal on all plates). Click “OK” when you have the settings appropriate.

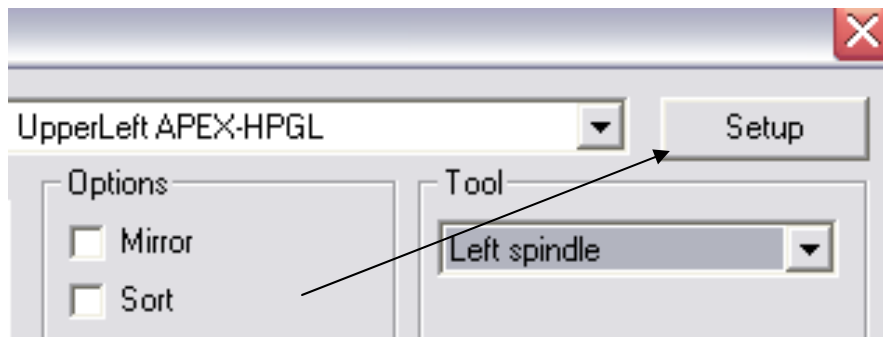




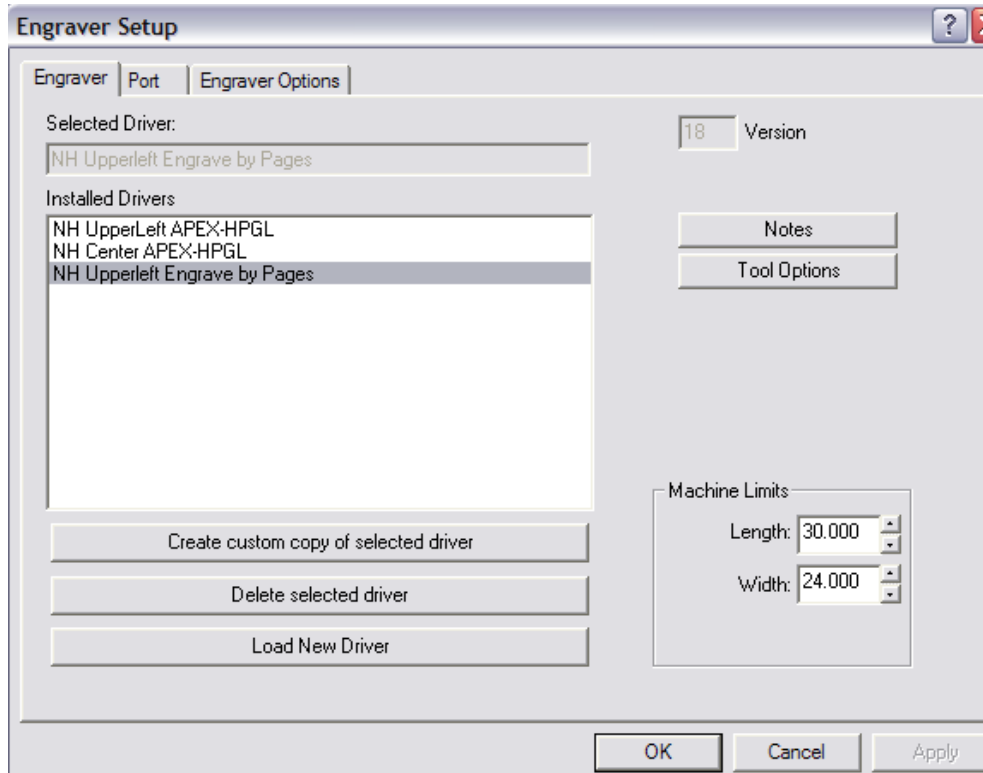
Now you must set a driver up to send by the page. First go to “engrave” > “engraving defaults”.



When the “output” menu comes up, click “setup”, located in the upper right hand corner.

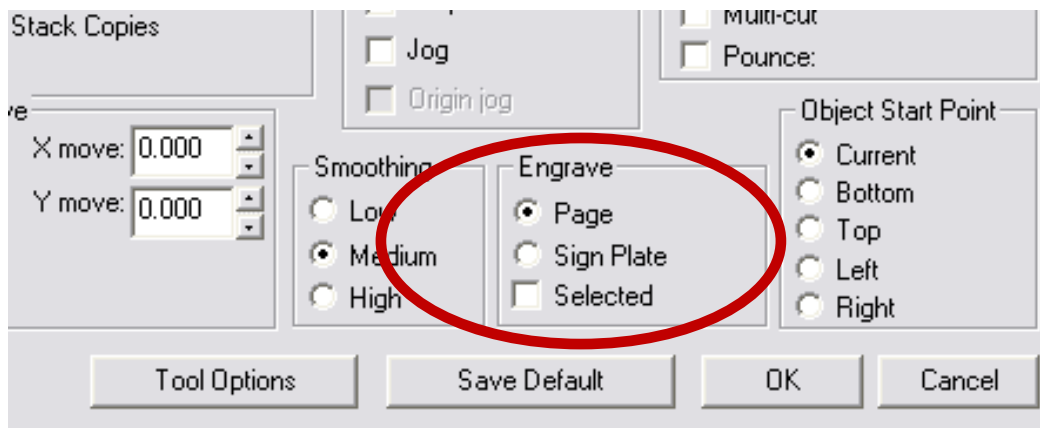


Select the NH Upper left driver or NH Center driver (depending on if you are running the plates with upper left or center home). Then click “create custom copy of selected driver”. When a box comes up asking you to name the driver put in a name you will recognize as engraving by the page (ex. NH Upper left Engrave by page).

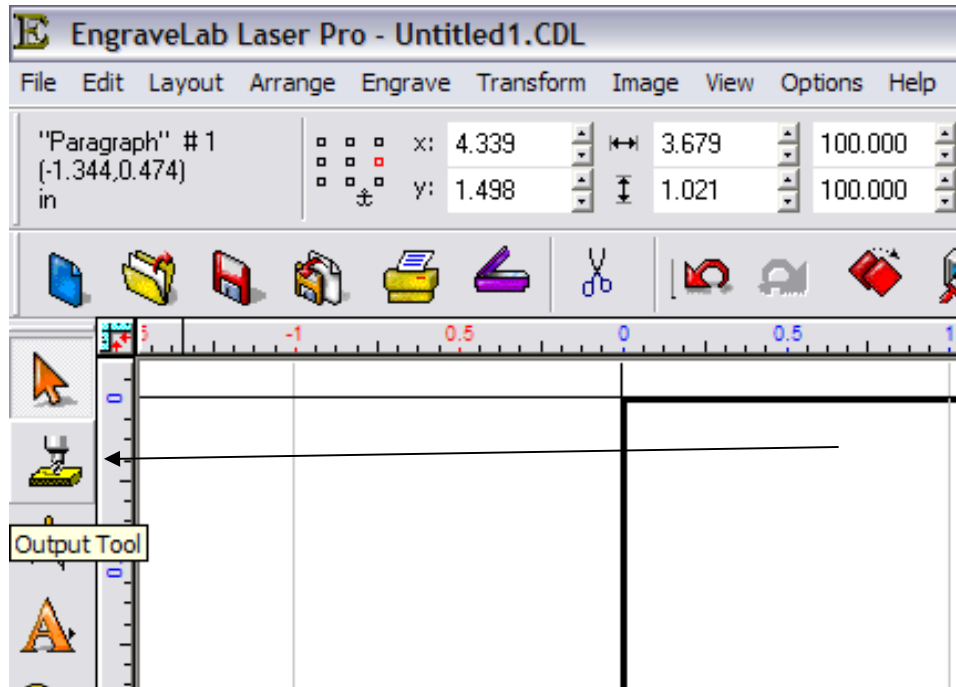


Click “Apply” & then “OK”.

Now when at the “output” menu again select “page” instead of “plate”, and uncheck “selected”.

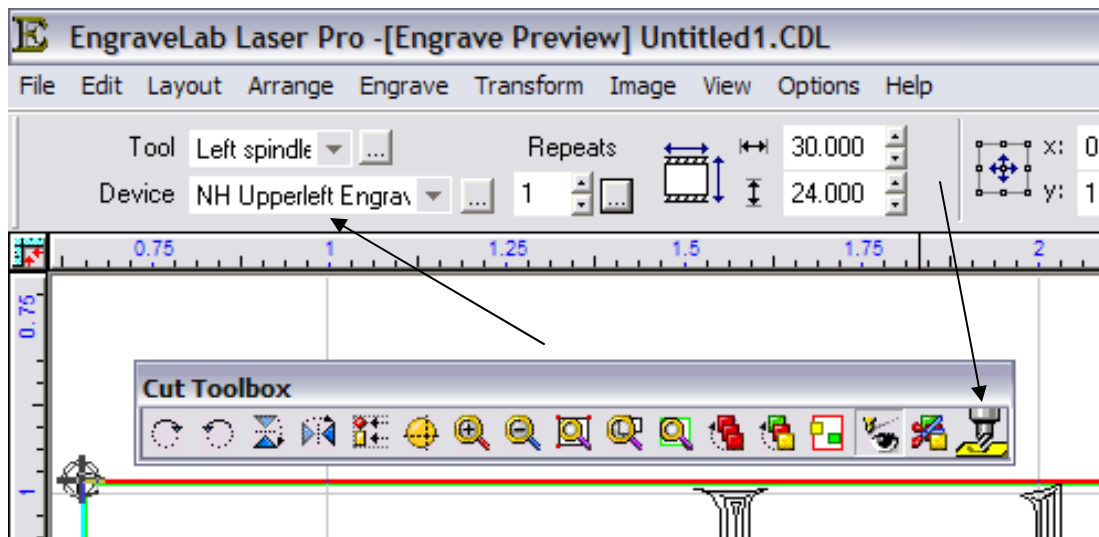


Click “save default” & then “OK”



You are now ready to send the job. Click the first "Output Tool" button located on the left side menu.

When it takes you to the engraving preview check the "device" box to be sure that your engrave by pages driver is selected.



When you click you click your final output button (above), it will bring up a "page selection" screen. Select the pages you would like to send...in this case I am sending all of the pages, and then click "OK".

## Page Selection



Print Pages

- All
- Current Page
- Pages:

(Example: 1-3,7-10)

OK

Cancel