

Technical Note: Q1010 – How do I turn on the display time on the HPGL controller (LCD equipped)?

July 16, 2004

Overview

A new feature has been added to the current production controller using the K520 CPU board that displays the job time on the LCD when executing a job. This document describes how to enable that feature on supported HPGL controllers.

Note: All controllers post March 2004 will have the feature turned on by default.

Requirements

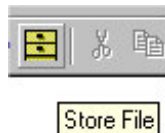
1. Must have a K520 CPU or H971 rev 4B. Earlier H971 boards are not supported.
2. APEX Product Software release date 03.01.04 or higher. (INIT file 3.06 or higher and HTML interface of Machine Parameters 1.01 or higher.

Procedure

1. Turn on the HPGL.
2. Update the APEX Product Software either by installing the CD or downloading the package from Newing-Hall, Inc. web site. www.newing-hall.com.
3. Open Motion Mechanic.



4. Make sure Terminal is open by selecting tools on the menu bar followed by Terminal.
5. Download the latest version of the INIT file by pressing the Store File button.



6. The defaults to the INIT file location in the controller – press the OPEN button to transmit the file to the controller.
7. Close Motion Mechanic.
8. Open Machine Parameters.



9. Scroll down on the right side until you locate the Display Job Time During Execution. Make sure this check box is checked.
10. Save the Parameters to the controller by pressing the Update Machine Tool icon.



11. Exit Machine. Parameters.