



How to Import Graphics

1- Create an *element* box on the plate. (See Fig. 1)

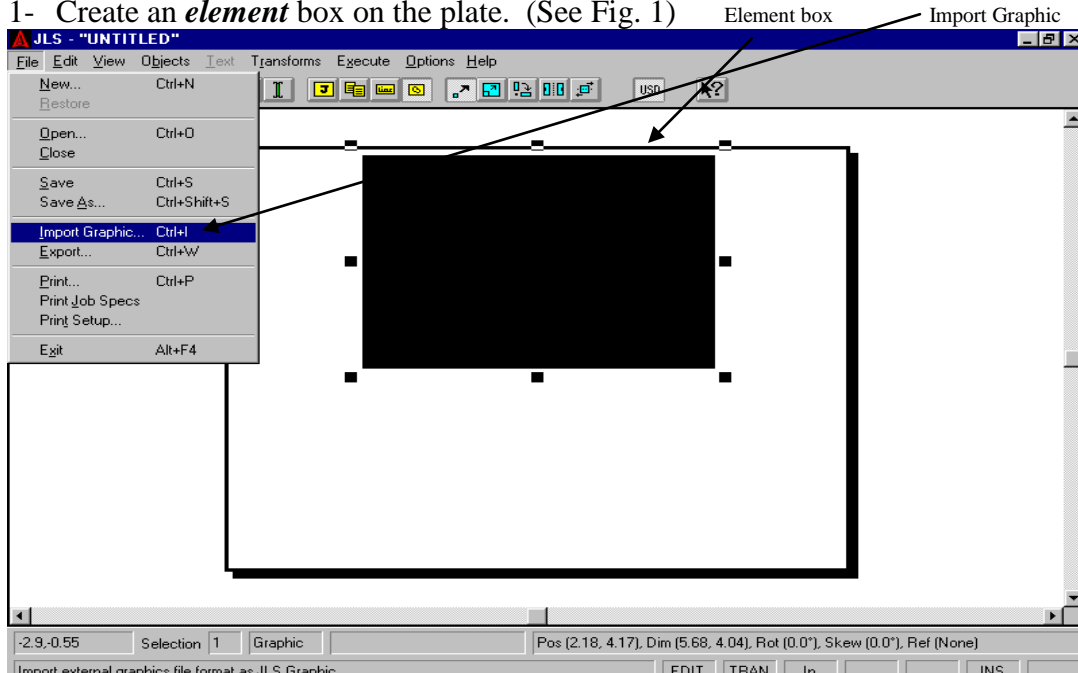


Fig. 1

2- Click on *File* then *Import Graphic* (See Fig. 1)

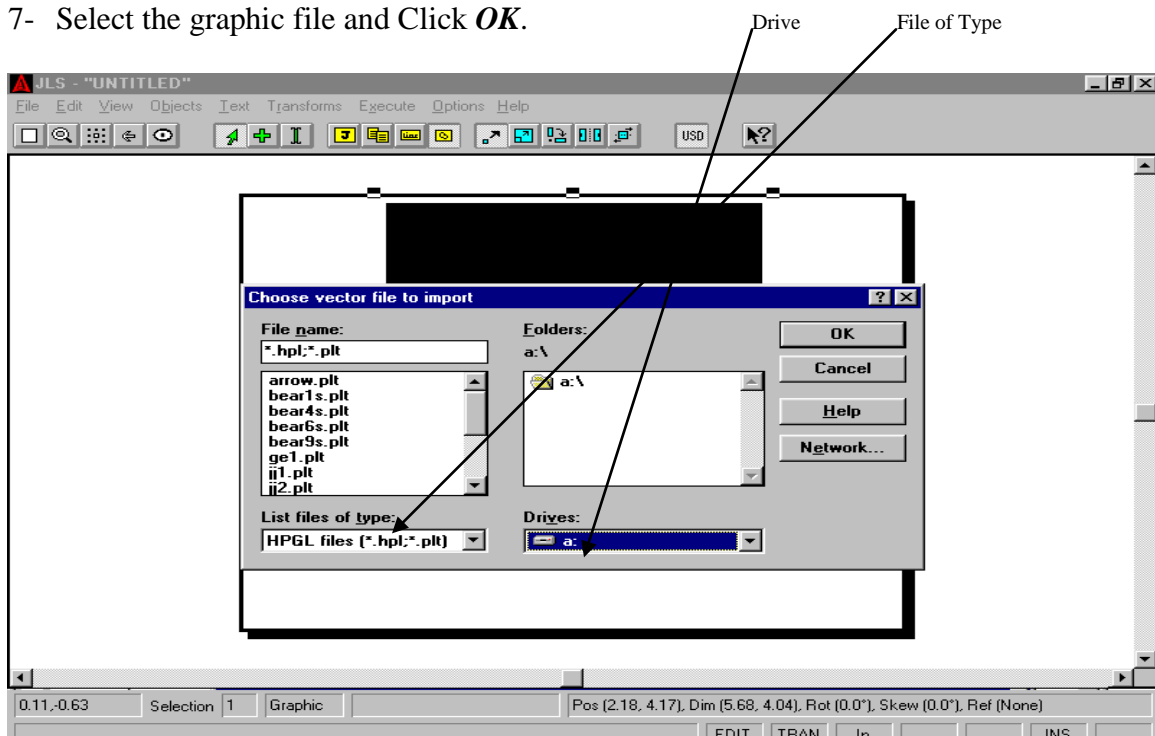
3- The *Choose a Vector File to Import* dialog box will come up. (See Fig. 2)

4- Change *File of Type* to the type of file you are importing (JLS will accept DXF, PLT, MCR, and WMF).

5- Change the *Drive* to the drive where the file you are importing is located.

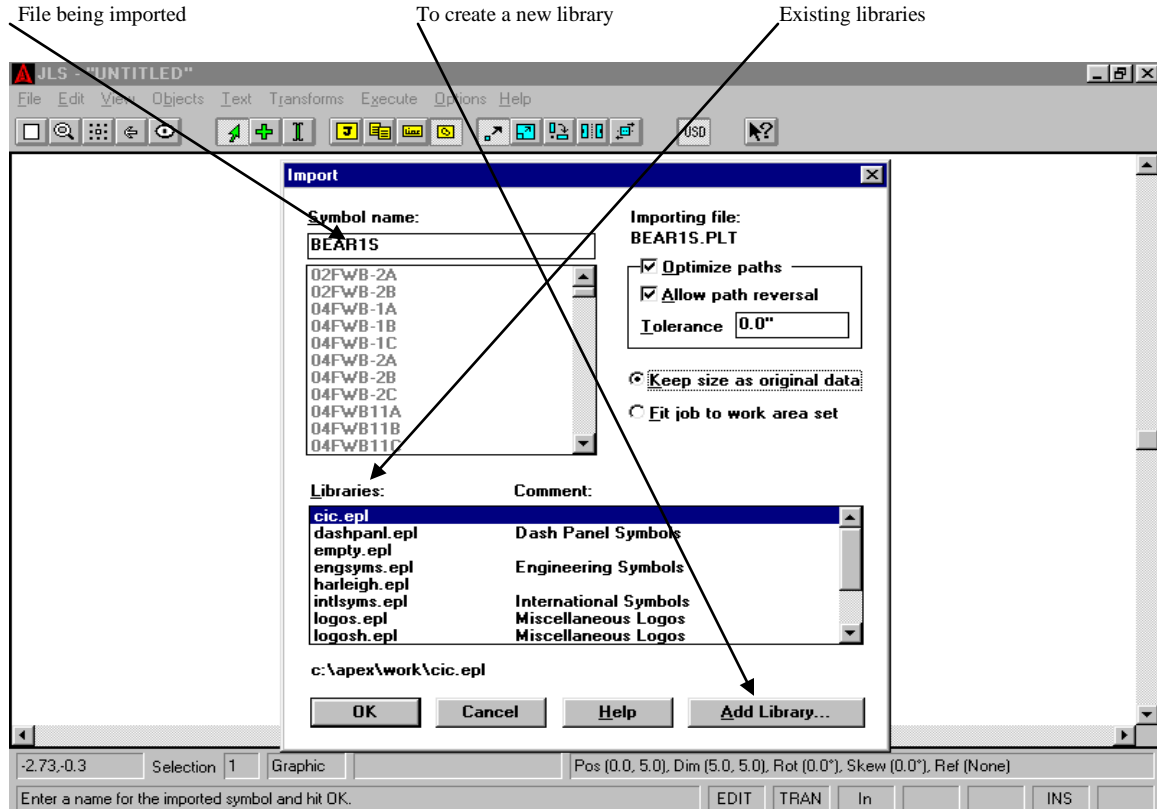
6- Open the folder where the graphic is located.

7- Select the graphic file and Click *OK*.



(Fig. 2)

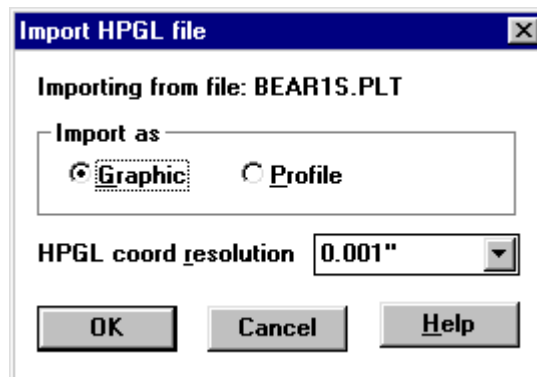
- 8- Next you will need to select a library to import the graphic into. You can also create a new library (See Fig. 3).



(Fig. 3)

- 9- You can also *Optimize paths*, *Allow path reversal*, and *Keep size as original data* or *Fit job to work area set* (this will import the file to the size of the element box you created).

- 10- Click ok in the *HPGL Import* dialog box (See Fig. 4).



(Fig. 4)