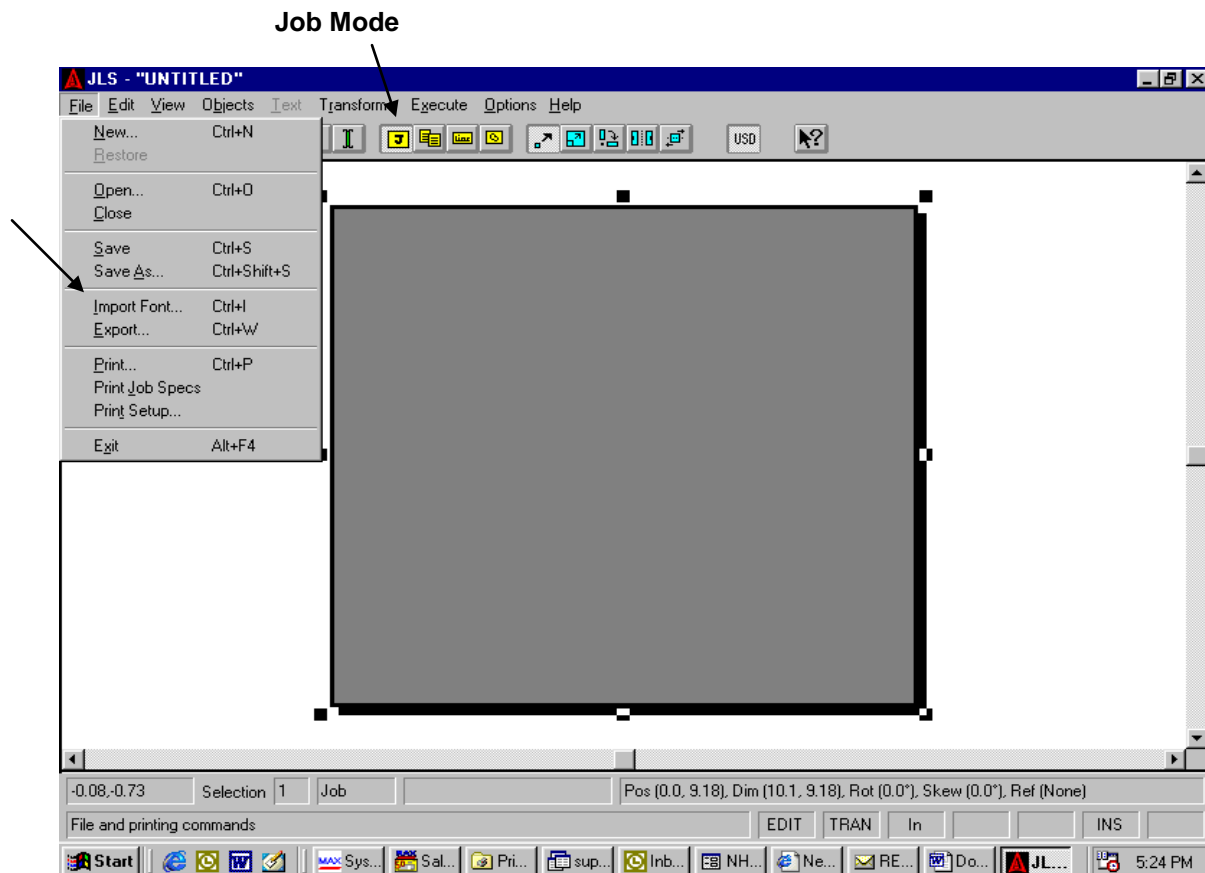


How to Import True Type Fonts

Step 1- Create a new job

Step 2- In job mode: go to *File* then *Import Font* (See figure 1)



(Figure 1)

**Step 3- Select the desired True Type Font you wish to import
(The list of available TTF comes from the Windows\Font folder)**

Step 4- Rename the font

Step 5- Click *OK*