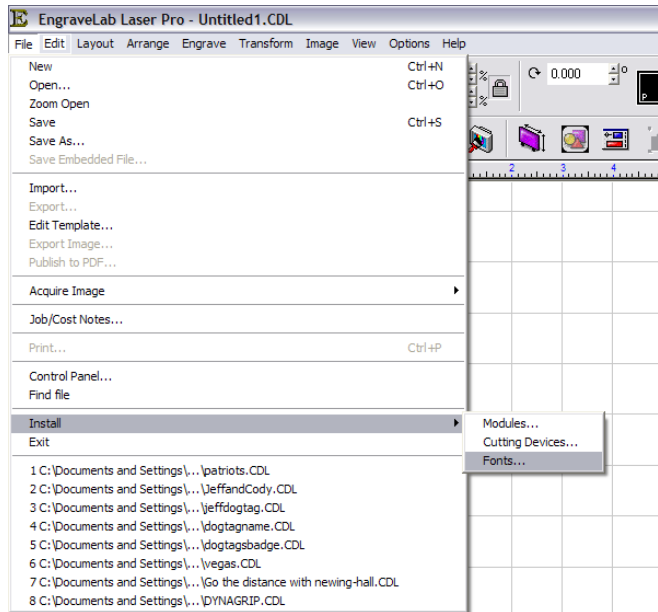


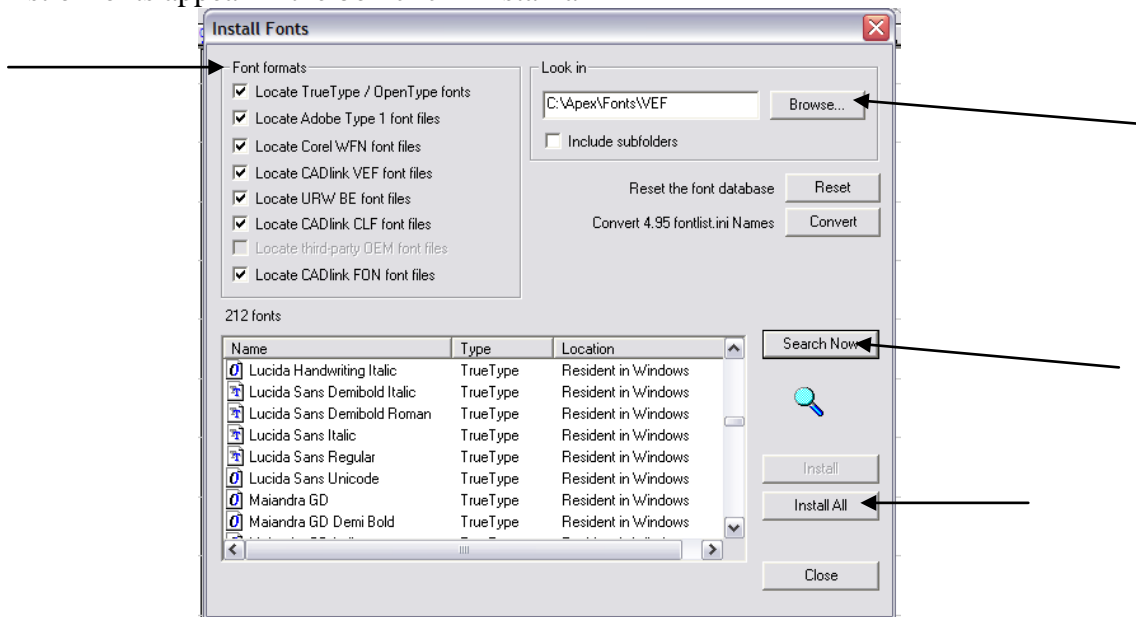


Installing Fonts in EngraveLab

- File
- Install
- Fonts



- Make sure all boxes in top left are checked
- Click “browse” and set “Look in” box to the “vef” folder under apex\fonts
- When the correct folder is selected click “search now”
- After the list of fonts appear in the box click “install all”



When the fonts are installed you may need to restart EngraveLab so the changes may take place immediately