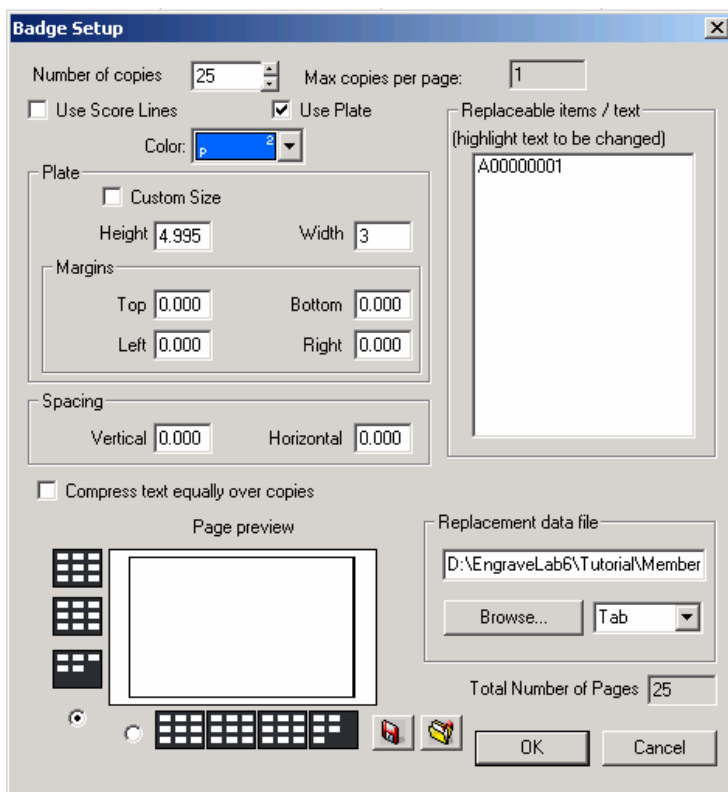


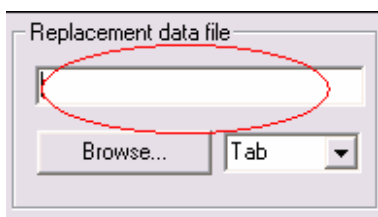
Serialization in EngraveLab 7

In this lesson, a description of how to serialize data for marking parts is described. For the purposes of this tutorial, we will assume that each part will be marked one at a time.

Open the file called Serialize.cdl. From the **Edit** menu, click on **Select All**. The text will now be selected. From the **Layout** menu, select the **Badges** option. The **Badge Setup** window will open.

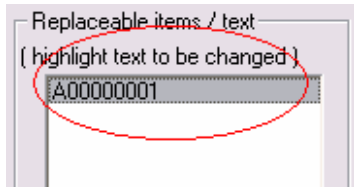


Set the **Number of copies:** option to the desired number of parts that need to be marked. For the purposes of this tutorial, set the number of copies to 25. Make sure that the **Use Plate** option is enabled. As we are marking one part at a time, make sure to disable the **Custom Size** option. The **Width** value should be 3.000 and a **Height** of 1.000. Disable the **Compress Equally Over Copies** option. Make sure that the **Replacement data file** option has no reference to any files – the text field should be blank and look as follows.

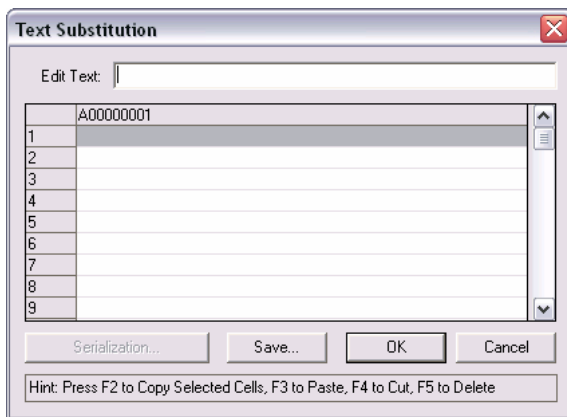


Lesson 9 – Serialization

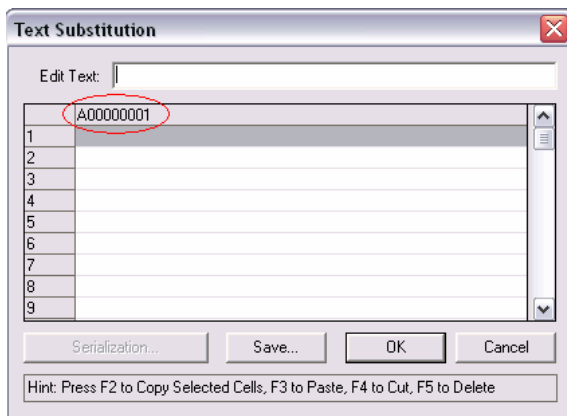
Single click on the text line A00000001 so that the line is highlighted as shown below.



Click on the **OK** button. The next window that opens is the Text Substitution window.

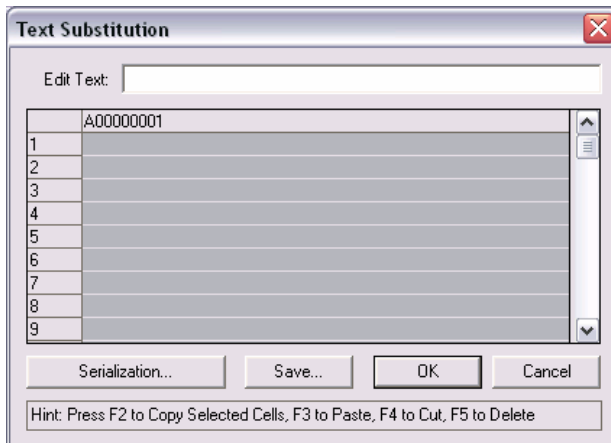


Single click on the Column Header labelled A00000001 as shown below

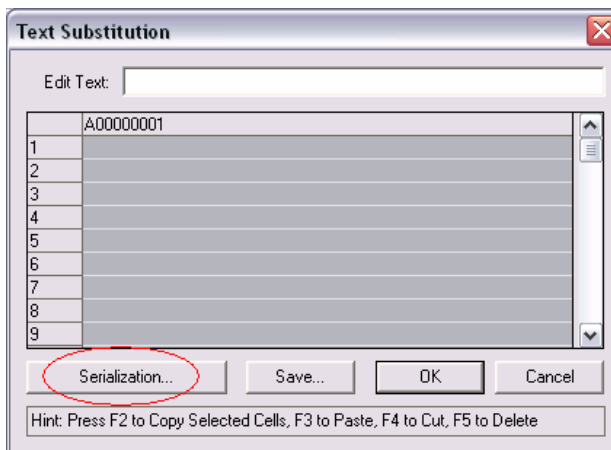


All rows should now be highlighted as shown below

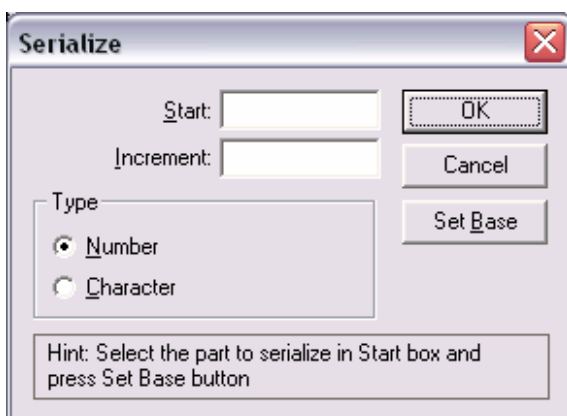
Lesson 9 – Serialization



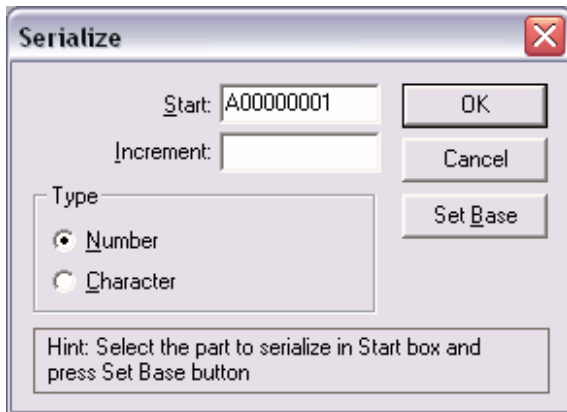
Next, click on the **Serialization** button.



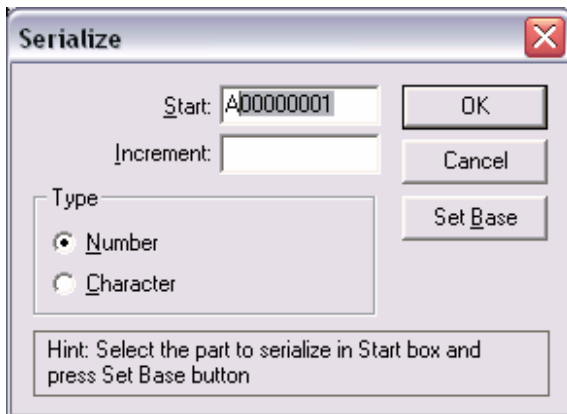
The Serialization window should now open



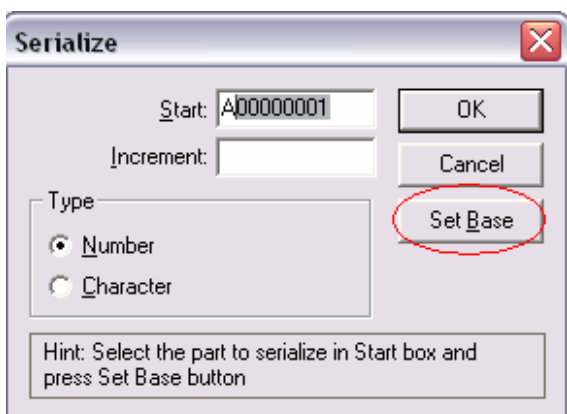
Type in the Start: text edit box A00000001



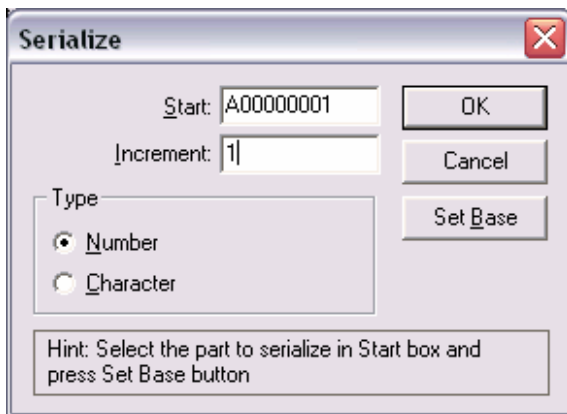
Select the number 00000001 in the Start text edit box. This can be done by sweep selecting 00000001 or by double clicking on the number. In either case the number should be highlighted as shown below.



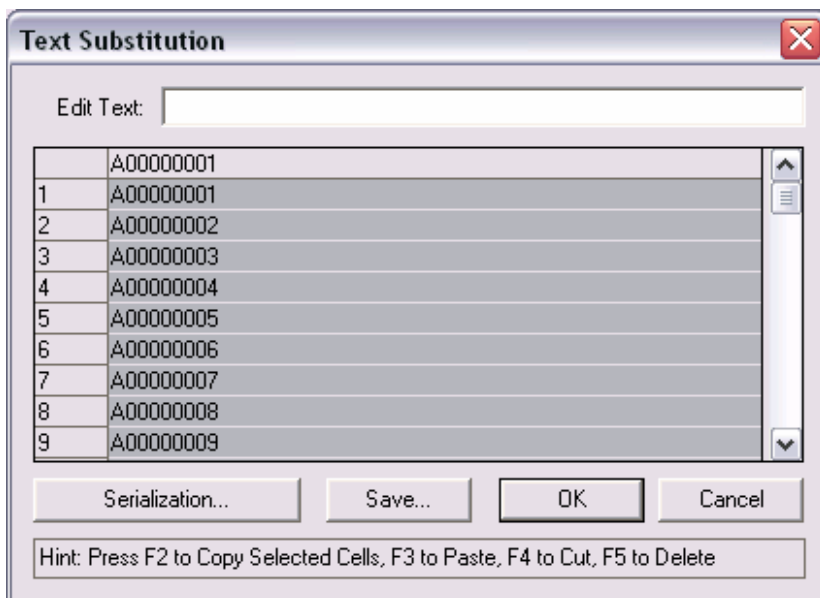
Next single click on the **Set Base** button



Set the **Increment** number to 1

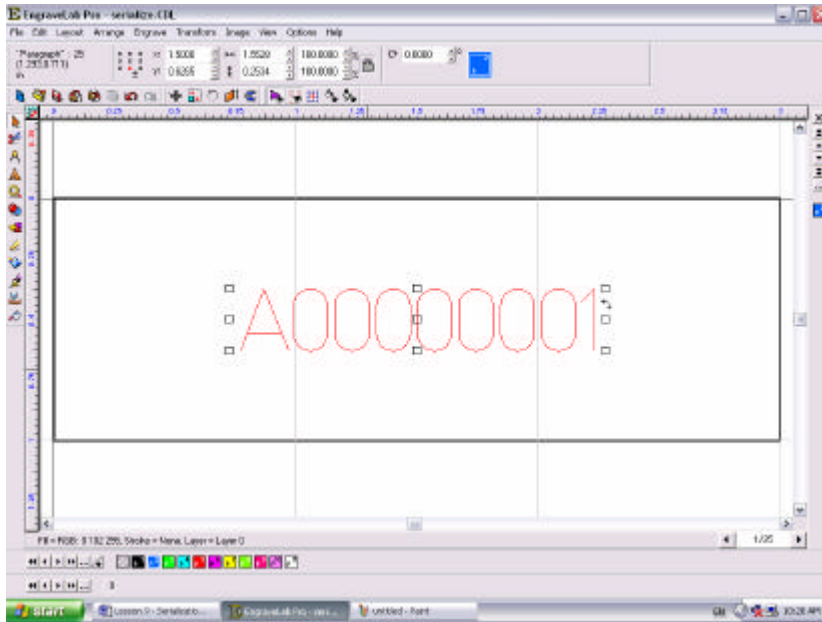


Select the **OK** button. The next window that will display is the **Text Substitution** window.



Click on the **OK** button. The main EngraveLab window display on screen and should look as follows.

Lesson 9 – Serialization



Note in the lower right corner of the EngraveLab window, the **Page Control** option



By single clicking on the **Next Page** control, the serialized data can be previewed.



Congratulations on completing the Serialization tutorial for EngraveLab 7.