

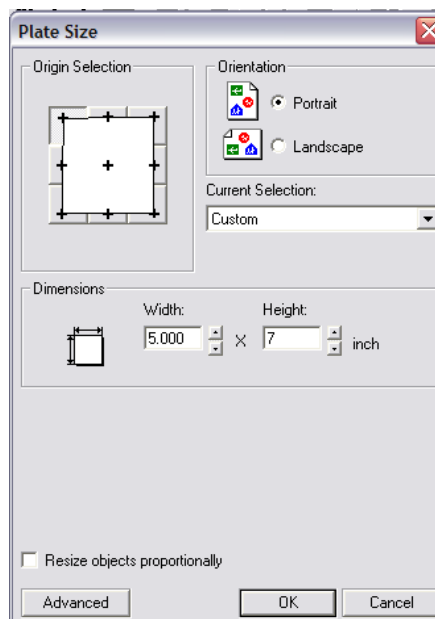


Newing-Hall, Inc.  
16092 King Rd.  
Haskins, OH 43525

# Setting Up a Basic Job in Engravelab



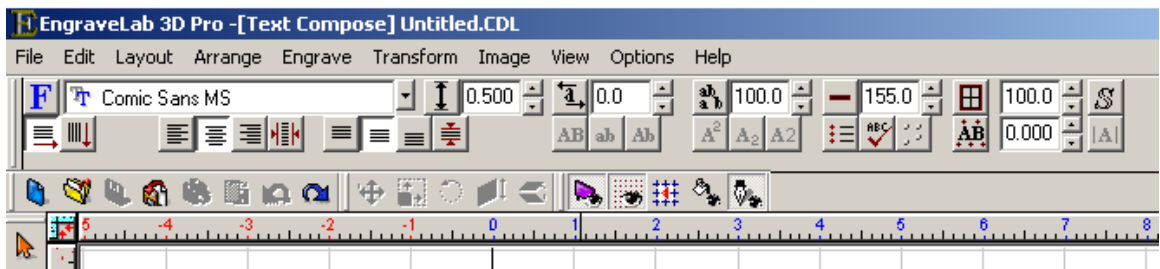
1. Make sure that you have the dongle inserted in the USB port and double click the Engravelab icon on your desktop.
2. When the program opens up, you will be taken to the plate size screen.
3. Choose the desired dimensions. For this example we will be doing a 5x7 plate. .



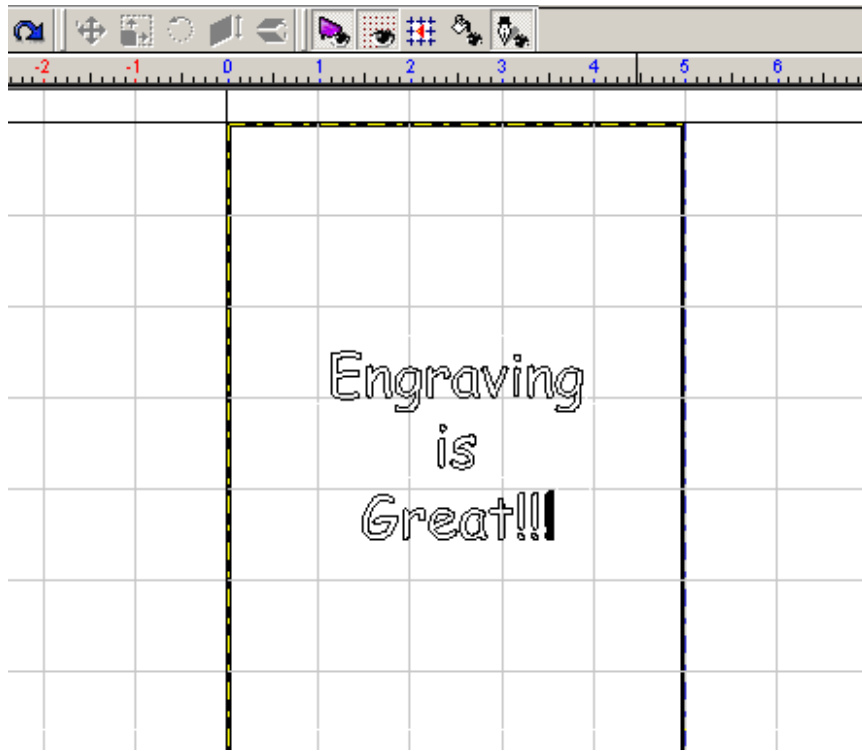
4. Now that we have a plate set up we can begin the design process. First, we will add text to our job. On the left side of the screen you will see a row of buttons, or icons for the various tools that Engravelab has to offer. Click on the “A” character for Text tools.



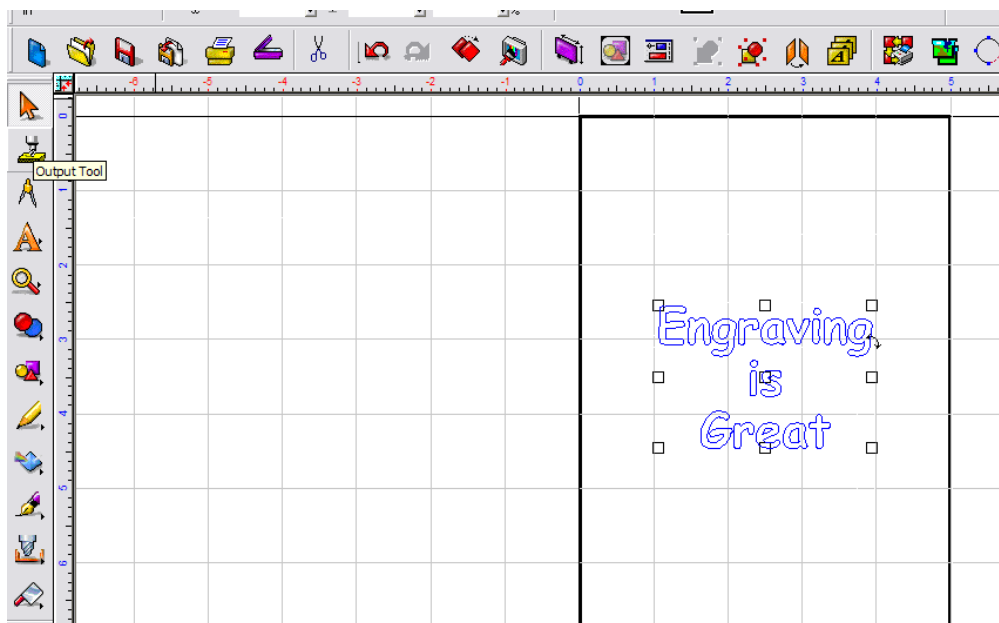
5. Now it is time to choose the font style and characteristics. The drop down box on the upper left corner will let you select the font of your choice. For this exercise, we will be using Comic Sans MS.



6. You can choose a variety of other options during text entry. Orientation, size, and spacing are just to name a few. These are located around the font selection and can be set any way you like to fit your jobs needs. We will leave these at the default settings during this tutorial.



7. Next, we will type our text “Engraving is Great!!!” Make sure to press enter after each word to break up the sentence. Notice that the text is center aligned. This is the default setting for text in Engravelab. If at any time you want to change this, use the buttons by the font selection.

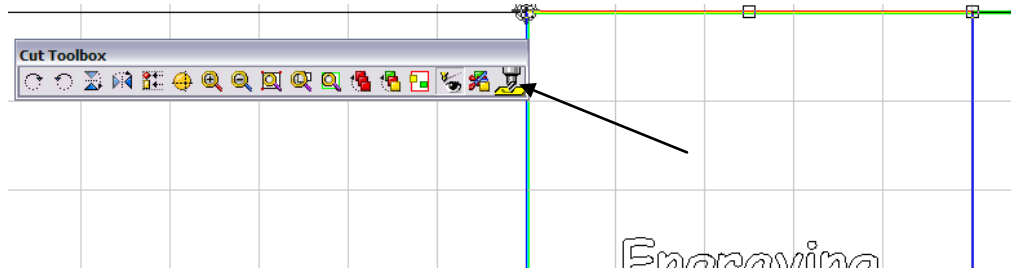




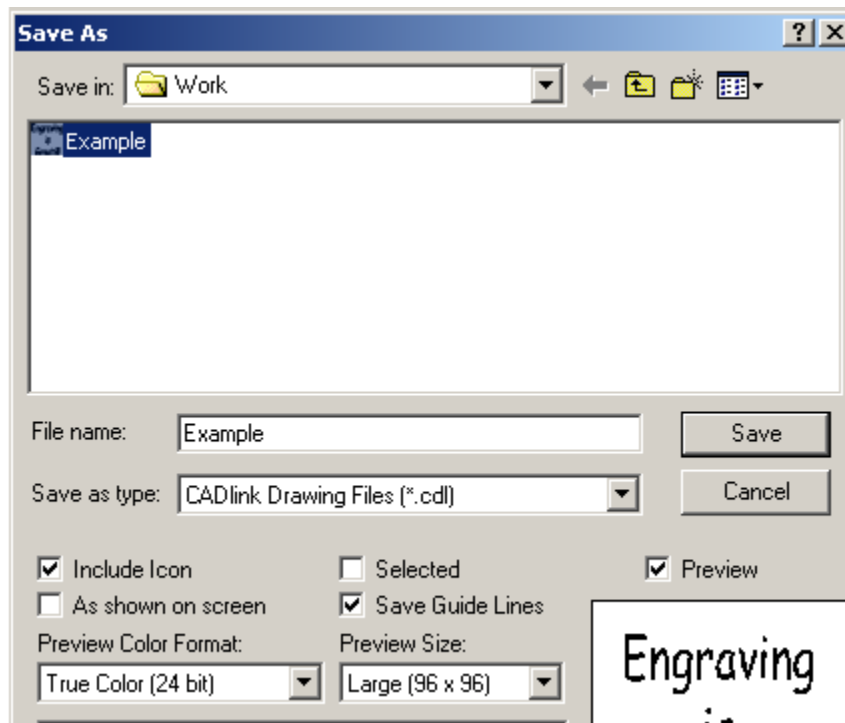
**Newing-Hall, Inc.**  
16092 King Rd.  
Haskins, OH 43525

---

8. Select the arrow (select tool) from the left side of the screen and click the text to highlight it. Then select the scissors (output tool). Now we are ready to send it to the engraving machine.



9. From this toolbar you can now send the job to your engraver by clicking on the drill in the toolbar.



10. If all goes well, you can then save your file to the hard drive by going to the file dropdown and choosing Save As command. You can save the files any name you want to any directory. Try to use the same directory for all of your jobs to make it easier to find them later.

11. Congratulations! You have just created, executed, and saved a job.