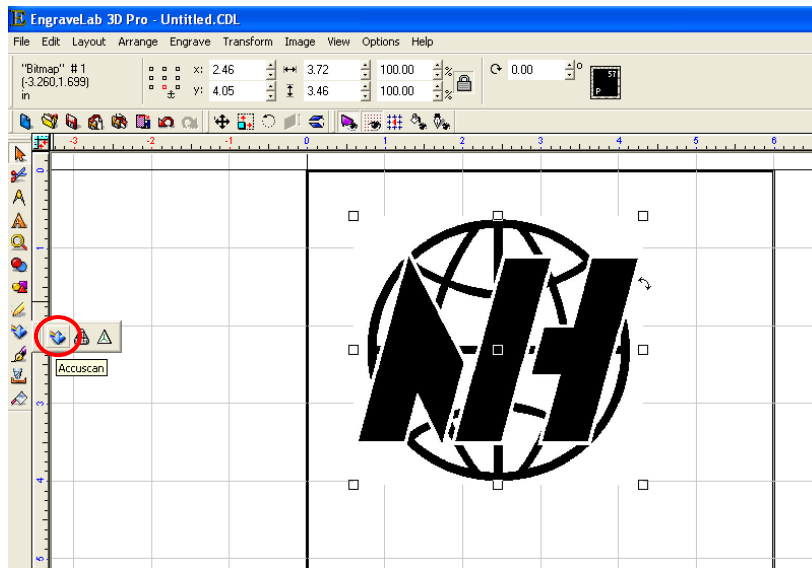




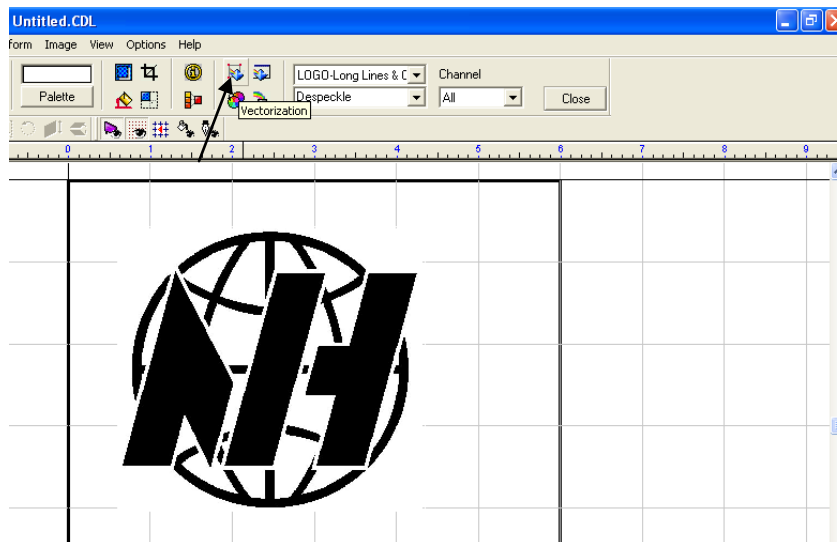
Newing-Hall, Inc.
16092 King Rd.
Haskins, OH 43525

VECTORIZING AND FILLING A LOGO USING ENGRAVELAB

1. File/Import, select scanned image to import.
2. Select logo and go to image then mode and select “monochrome”
3. Select the accuscan pyramid rainbow icon on the left toolbar, then select accuscan.

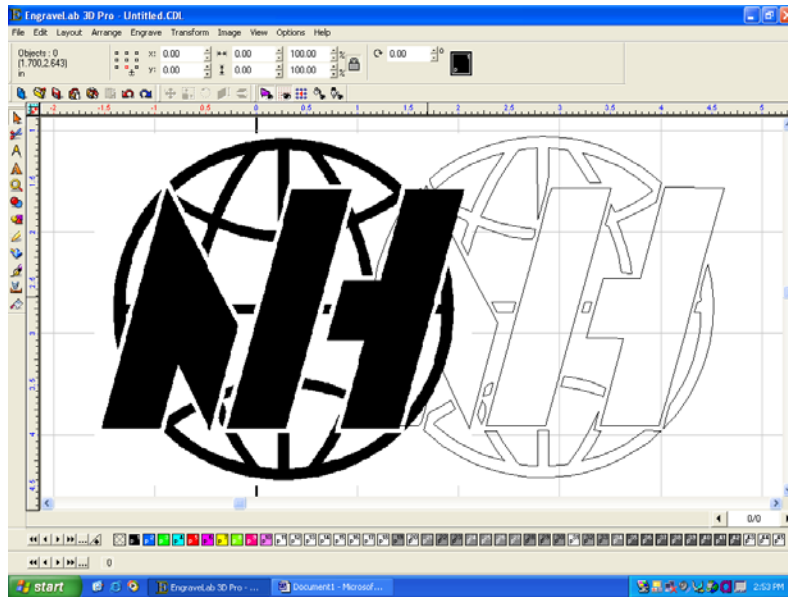


4. Accuscan options will open up on top toolbar.
5. Logo-Complex with detail and despeckle should be selected in this case.
6. Select the vectorization icon as shown below to vectorize.
(If your logo is in color, you can posterize using the posterize icon just below the vectorize icon, and tell it how many colors, or you can convert the logo beforehand to monochrome and then vectorize or to grayscale, then posterize and vectorize. Scanning image originally in b&w will produce the best results.)



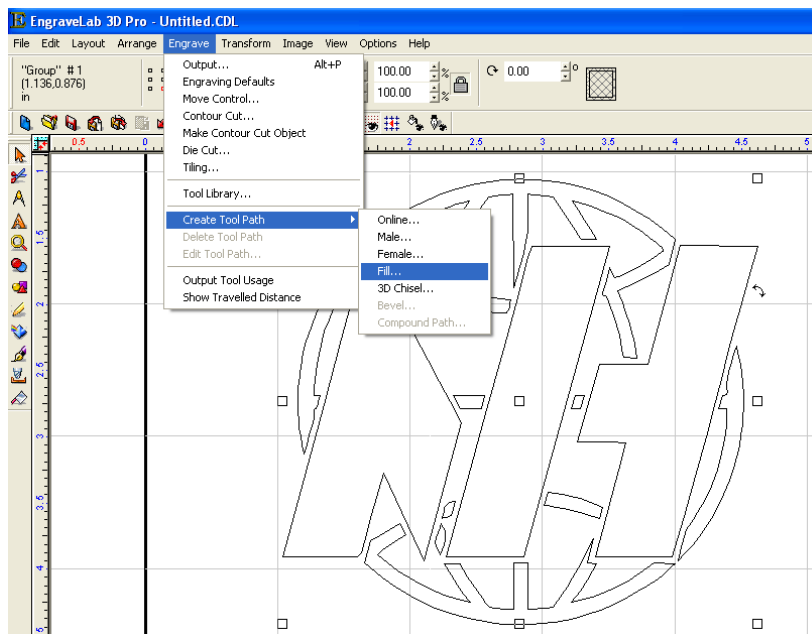


Newing-Hall, Inc.
16092 King Rd.
Haskins, OH 43525



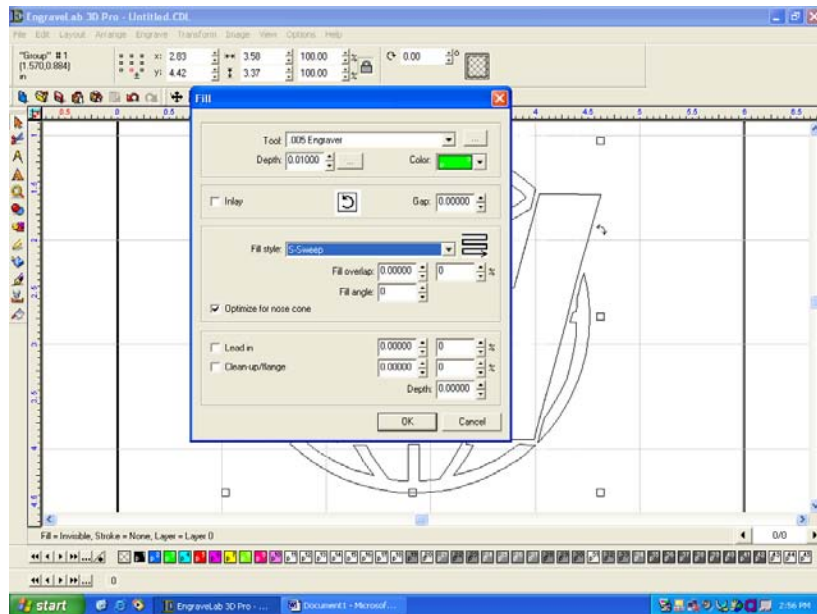
7. Select bitmap, pull away to verify just bitmap is selected, and delete it leaving just the vector logo.

8. To add a fill to the logo, select it, then go to Engrave/Create tool path/Fill.





Newing-Hall, Inc.
16092 King Rd.
Haskins, OH 43525



9. Select the Tool, Fill Style, and Overlap you require. Using the pneumatic spindles does not require any other field here. Click OK.
10. If you do not see a tool path pattern, click on View and make sure Show Tool Paths is turned on and Show Fill is off.

