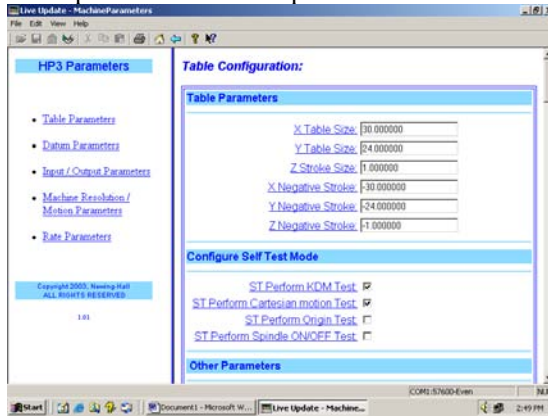
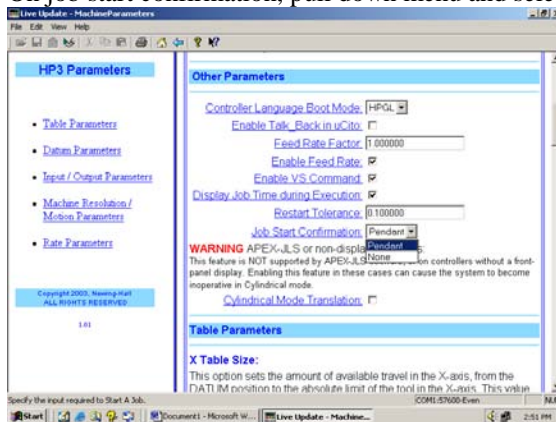


November 29, 2004

1. Be sure JLS is closed. Open machine parameters located in the Apex product software group.
2. Table parameters will be open



3. Scroll down to Other Parameters.
4. On job start confirmation, pull down menu and select none.



5. Click on the handshake button on the toolbar to send new parameters to controller. Controller will reboot and you will need to turn on the drives and reset your home.

