



Newing-Hall, Inc.

2019 Monroe Street . Toledo, Ohio 43604

Phone:(800)255-8804 Fax:(800)435-7131

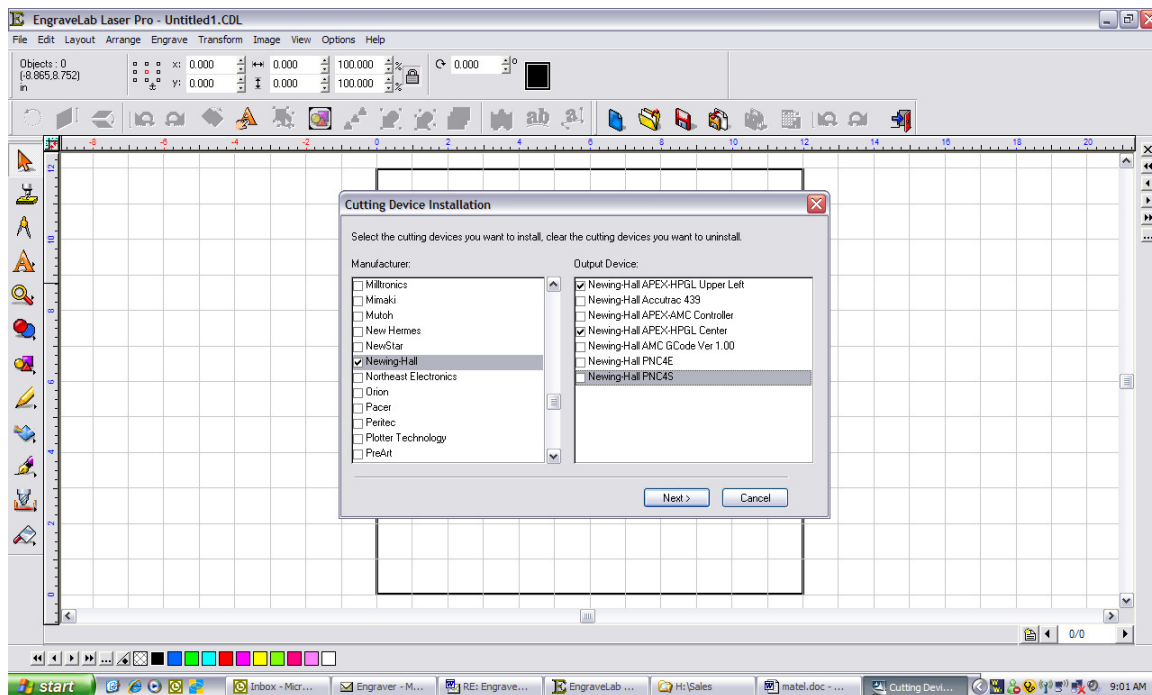
www.Newing-Hall.com Info@Newing-Hall.com

Installing and setting up drivers in Elab

If cutting devices were installed upon initial EngraveLab installation you can skip the section regarding cutting device installation.

Installing cutting devices (drivers)

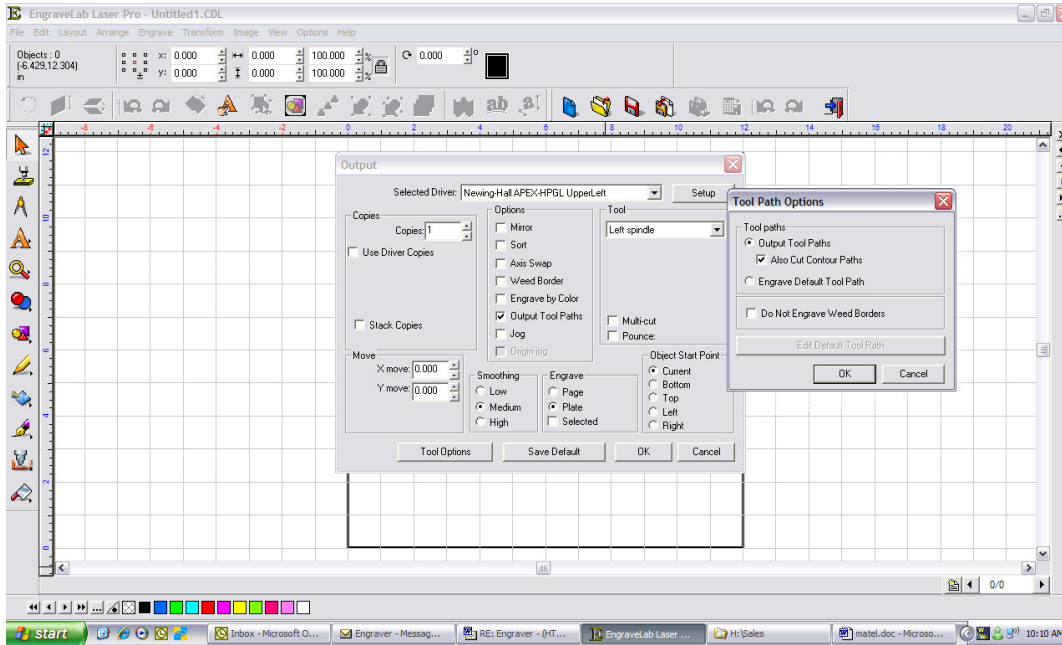
1. Open EngraveLab
2. Click on file/install/cutting devices
3. Select Newing-Hall on the left and then Newing-Hall APEX HPGL Upper left and Newing-Hall APEX HPGL Center (see illustration)
4. Click next and the drivers will install.



Setting up the drivers

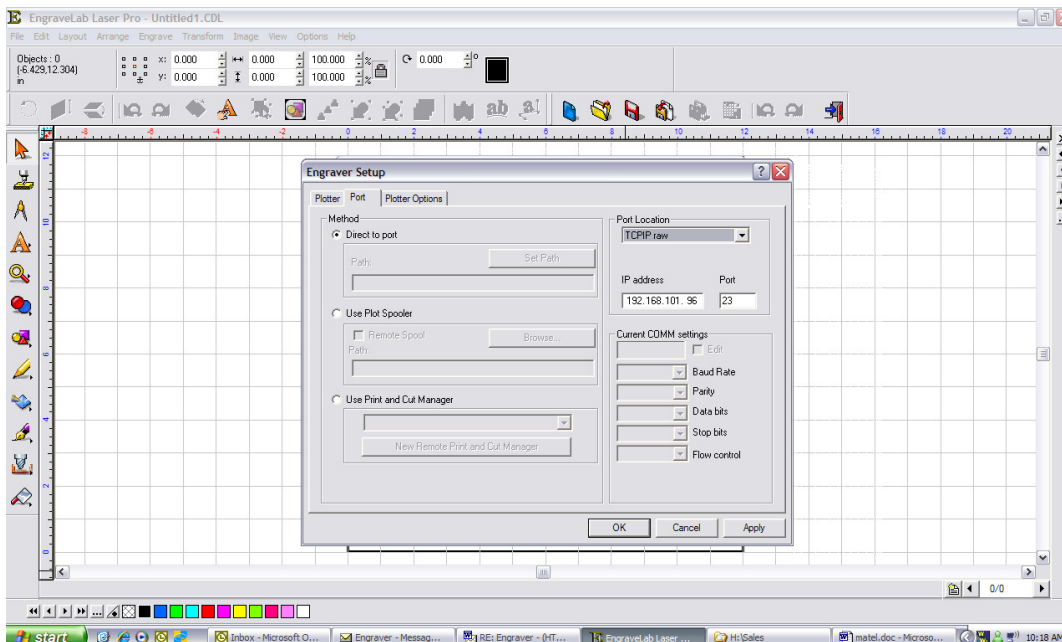
1. Click on engrave/engraving defaults
2. In the selected driver box, select either the center or upperleft Newing-Hall driver depending on which home position you are planning to use.
3. When you select the output tool paths box, the tool path options box will open. You will need to select also cut contour paths. Then click ok (see illustration).
4. The engrave section will determine what actually gets sent to the machine. Normally plate will be selected so only items on the plate will be engraved. I also recommend selected, this will only engrave items that are selected on the plate to be engraved. This is helpful if you will be using 2 or more cutters on one item. If you are only using one most of the time, it will be easier to unselect the selected box so you don't have to select everything each time you want to send it to the machine.

- Click the setup button next to the selected driver box to set up the communication info. Click on the port tab at the top. This is where you set up either Ethernet or serial port.



Setting up for use with Ethernet cable

- Port location should be set to TCP/IP raw.
- IP address should match the IP address on the controller. To find it, press enter on the controller and scroll down to Ethernet settings, then display IP
- Port should be 23
- Click ok, then click save default on the output box, then click ok. The driver is ready.



Setting up for use with serial cable

1. Port location should be set to whichever port you are connected to on your pc (comm. 1 or comm. 2)
2. Next you will need to check the comm settings section. To make changes you will need to select the edit box
3. Baud rate should be 57600, Parity E, Data bits 8, Stop bits 1, Flow control hardware.
4. Click ok, then click save default on the output box, then click ok. The driver is ready.

